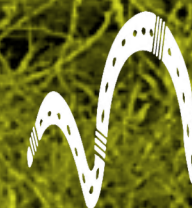


FINAL CONCEPT DESIGN

# FLOWERDALE BUSHFIRE MEMORIAL

JANUARY 2017

SD01.15092.00



Murrindindi  
Shire Council

**CONVIC**



## ACKNOWLEDGEMENTS

Convic Pty Ltd. acknowledge the contributions of all those who participated in the pre-design workshop phase of the Murrindindi Bushfire Memorials, including Murrindindi Shire Council (MSC) staff and Flowerdale residents, community groups and other stakeholders who responded to the various opportunities for input and/or who provided advice and information where required.

## KEY DEFINITIONS

Repeated terms and organisational acronyms used throughout this report are defined for clarity as follows:

**MSC** - Murrindindi Shire Council

**MBM** - Murrindindi Bushfire Memorials

PREPARED BY

**CONVIC**

FOR



**Murrindindi**  
Shire Council

# MURRINDINDI BUSHFIRE MEMORIALS: DEVELOPING MEANINGFUL MEMORIALS FOR THE SIX COMMUNITIES OF MURRINDINDI AS PLACES OF REMEMBRANCE, REGROWTH AND RENEWAL.

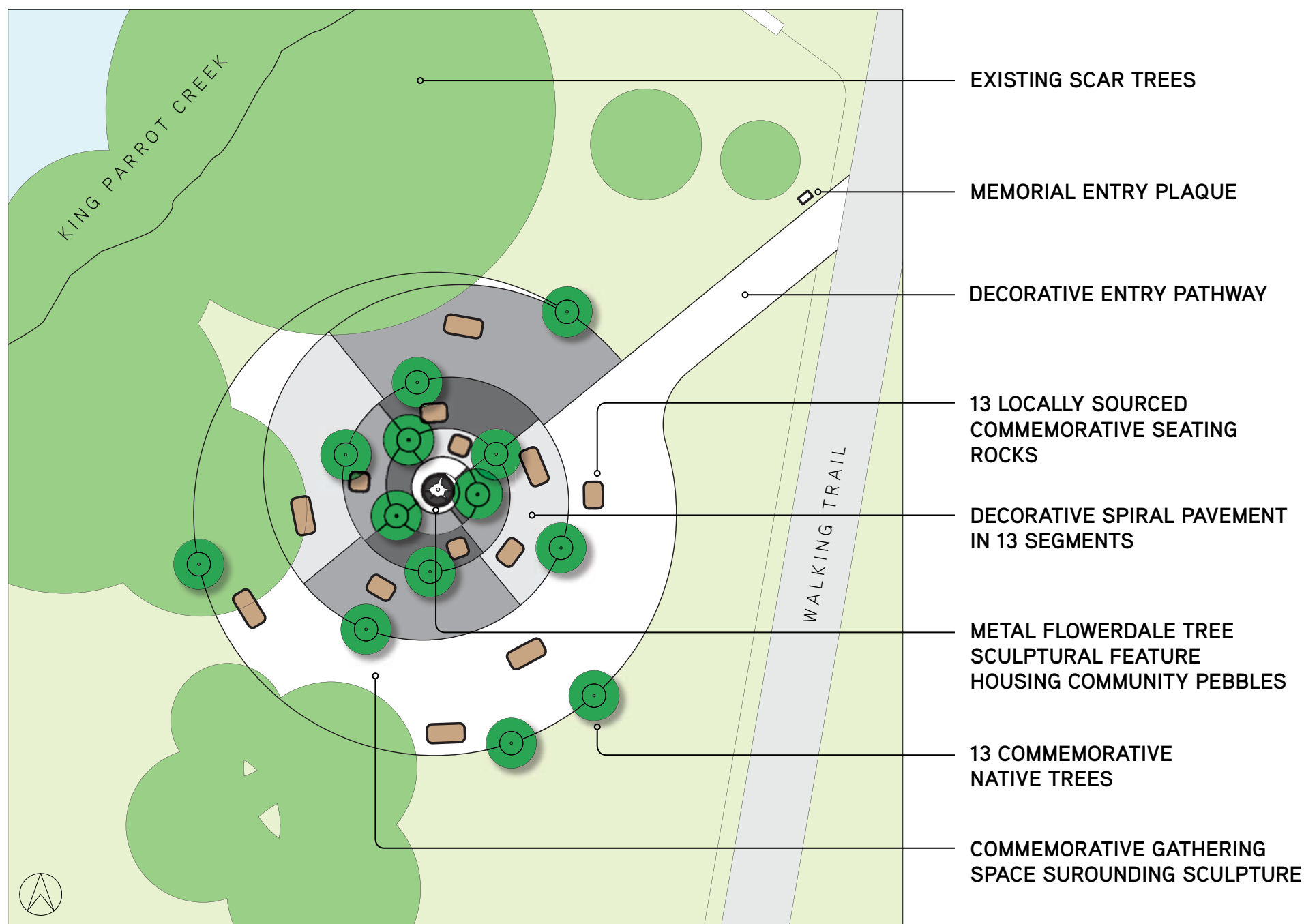
## PREFERRED OPTION

Plan + Detail	03
Render	04
Reference Images	06

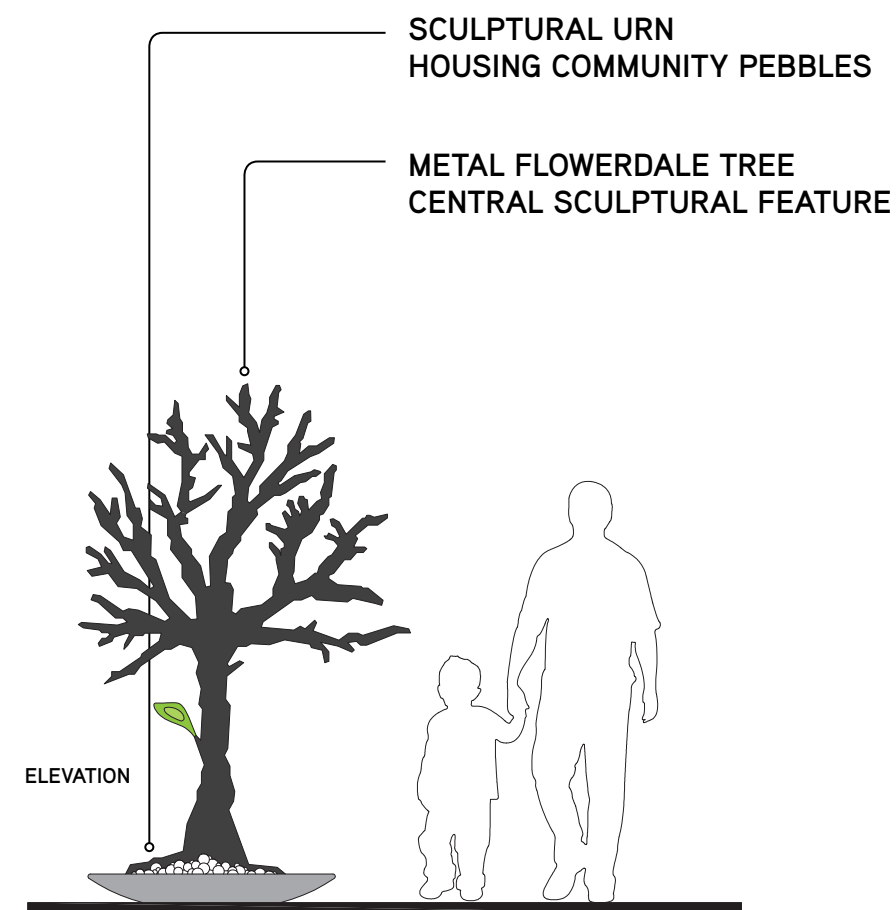
# OPTION 1 PLAN + DETAIL

## PLAN

The ground plane is a spiral motif, surrounded by a commemorative gathering space. The spiral motif is made up of 13 segments in coloured pavement with 13 seating rocks and 13 native trees carefully placed within. The inward journey leads to a place of remembrance, where a central Flowerdale Tree sculptural feature sits, housing the community pebbles at its base. The memorial is nestled between existing trees and walking trail.

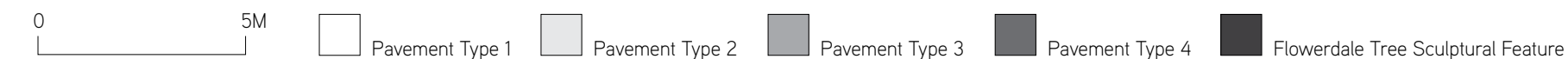


- EXISTING SCAR TREES
- MEMORIAL ENTRY PLAQUE
- DECORATIVE ENTRY PATHWAY
- 13 LOCALLY SOURCED COMMEMORATIVE SEATING ROCKS
- DECORATIVE SPIRAL PAVEMENT IN 13 SEGMENTS
- METAL FLOWERDALE TREE SCULPTURAL FEATURE HOUSING COMMUNITY PEBBLES
- 13 COMMEMORATIVE NATIVE TREES
- COMMEMORATIVE GATHERING SPACE SUROUNDING SCULPTURE



## CENTRAL SCULPTURAL FEATURE

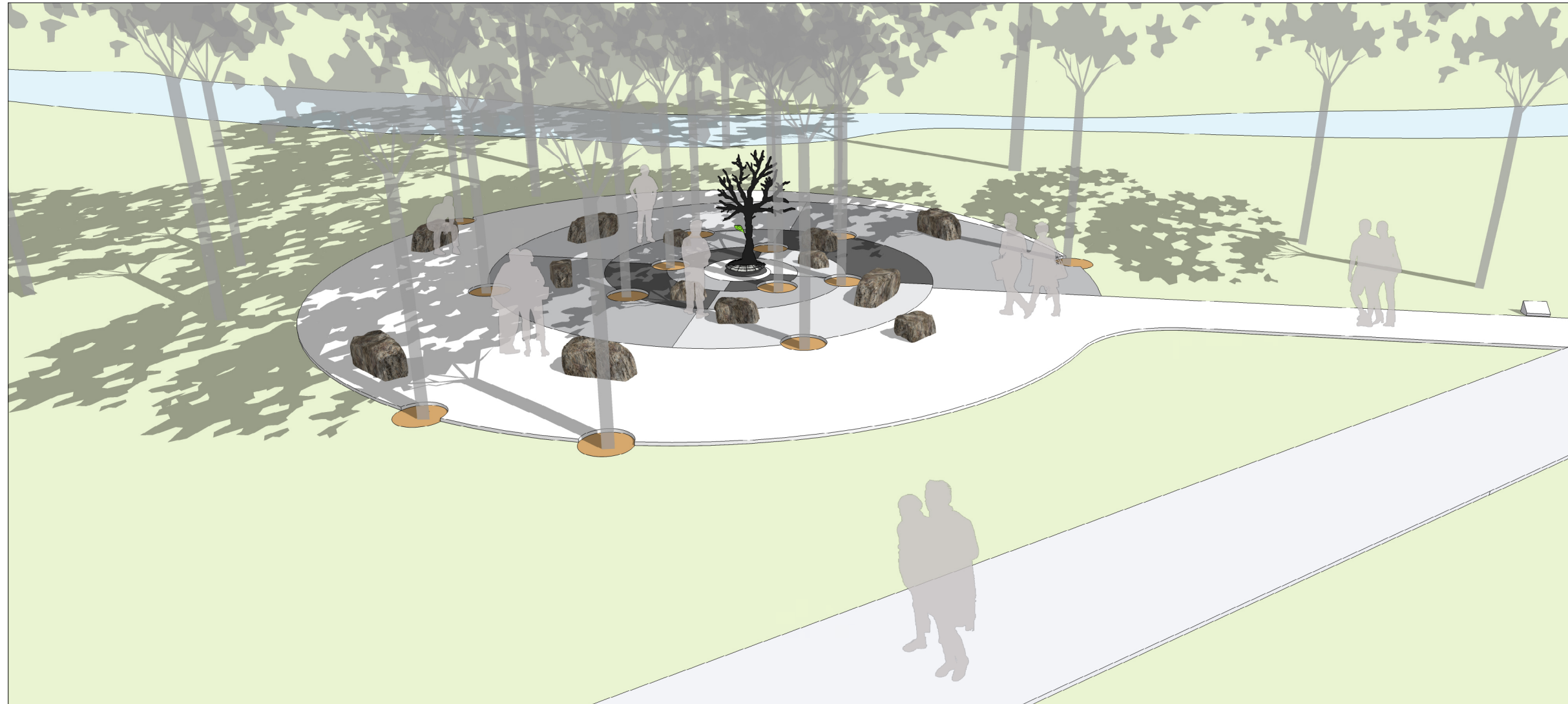
The central sculptural element is made of corten steel in the form of a large dish housing memory stones which hold special significance to the Flowerdale community. The dish is covered by a decorative wire frame lid with the Flowerdale tree motif as part of the design. The lid also has a hole in the centre allowing community members to add additional memory stones to the central sculpture. The sculpture to be designed by a local artist and or the Flowerdale Men's Shed.





**VIEW 1**

The memorial on approach from the north along the walking trail. Tall clean trunked trees allow clear views through the memorial space, maximising passive surveillance. The tree canopy above also provides a comfortable space for sitting and contemplation.



**VIEW 2**

The memorial from the adjacent walking trail. The siting of the memorial and scale relate directly to the adjacent large scar trees, young copse of gum trees and the majestic King Parrot Creek, with the Flowerdale tree sculpture as the central feature.



# REFERENCE IMAGES

CENTRAL FEATURE



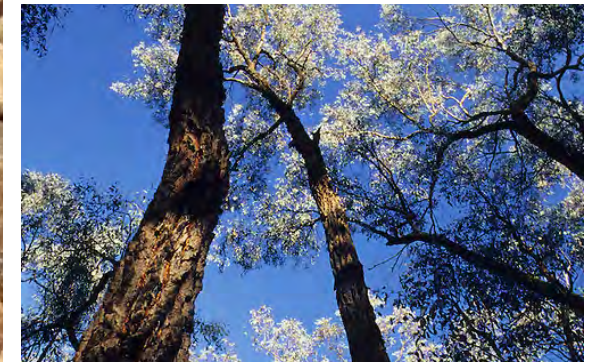
DECORATIVE PAVEMENT



SEATING ROCKS



FEATURE TREES



## REFERENCE IMAGES

The materials palette invokes an earthy, rustic and artistic quality. Shades of ochre, chocolate browns and high whites. Textured metal and delicate wire mesh fenestration. Granitic gravels, exposed aggregate concretes, sculptural tree trunks and beautiful flowering gums in a sea of red vibrancy.



THE FINAL CONCEPT DESIGN MAY BE SUBJECT TO REVIEW AND MODIFICATION DURING THE DESIGN DEVELOPMENT AND DOCUMENTATION STAGES TO REFLECT THE NOMINATED FUNDING ALLOCATION (\$25,000) AND IN-KIND COMMUNITY SUPPORT PROVIDED.

**BLANK**



**CONVIC**

**CREATE COMMUNITY**

UNIT 13, 46-50 REGENT STREET  
RICHMOND VIC 3121 AUSTRALIA  
T +61 3 9486 9899 F +61 3 9486 9088  
CONVIC.COM