

FINAL CONCEPT DESIGN

KINGLAKE BUSHFIRE MEMORIAL

JANUARY 2017

SD01.15092.00



Murrindindi
Shire Council

CONVIC

ACKNOWLEDGEMENTS

Convic Pty Ltd. acknowledge the contributions of all those who participated in the pre-design workshop phase of the Murrindindi Bushfire Memorials, including Murrindindi Shire Council (MSC) staff and Kinglake residents, community groups and other stakeholders who responded to the various opportunities for input and/or who provided advice and information where required.

KEY DEFINITIONS

Repeated terms and organisational acronyms used throughout this report are defined for clarity as follows:
MSC - Murrindindi Shire Council
MBM - Murrindindi Bushfire Memorials

PREPARED BY



FOR

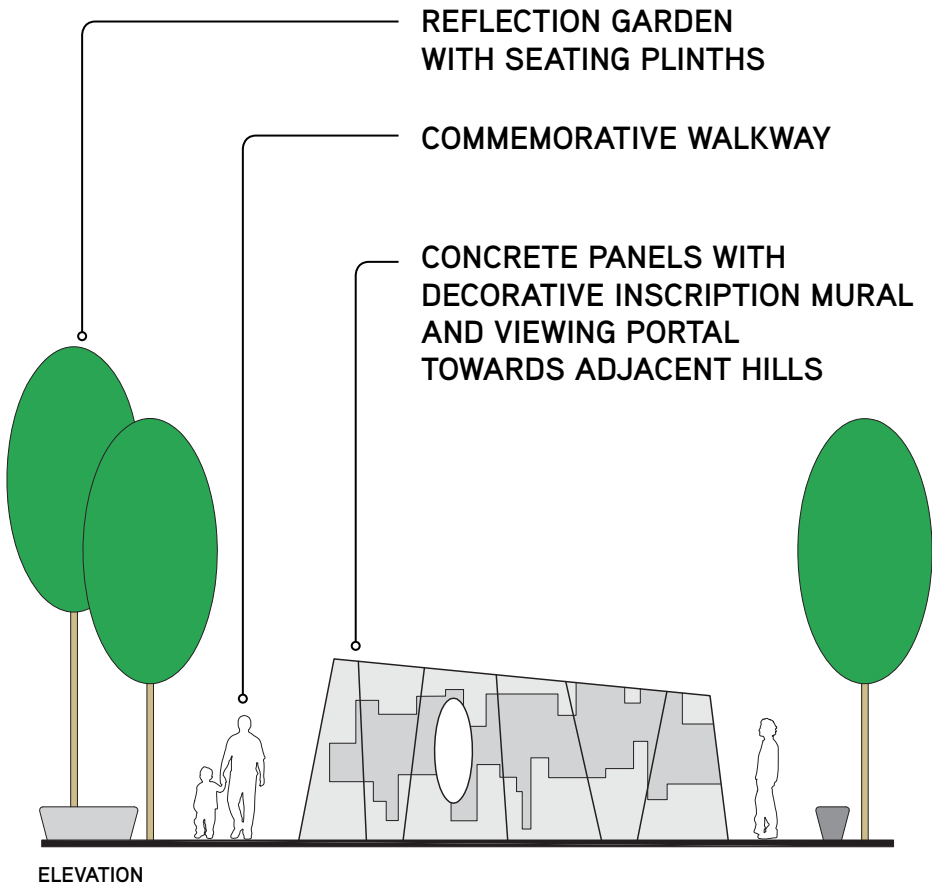
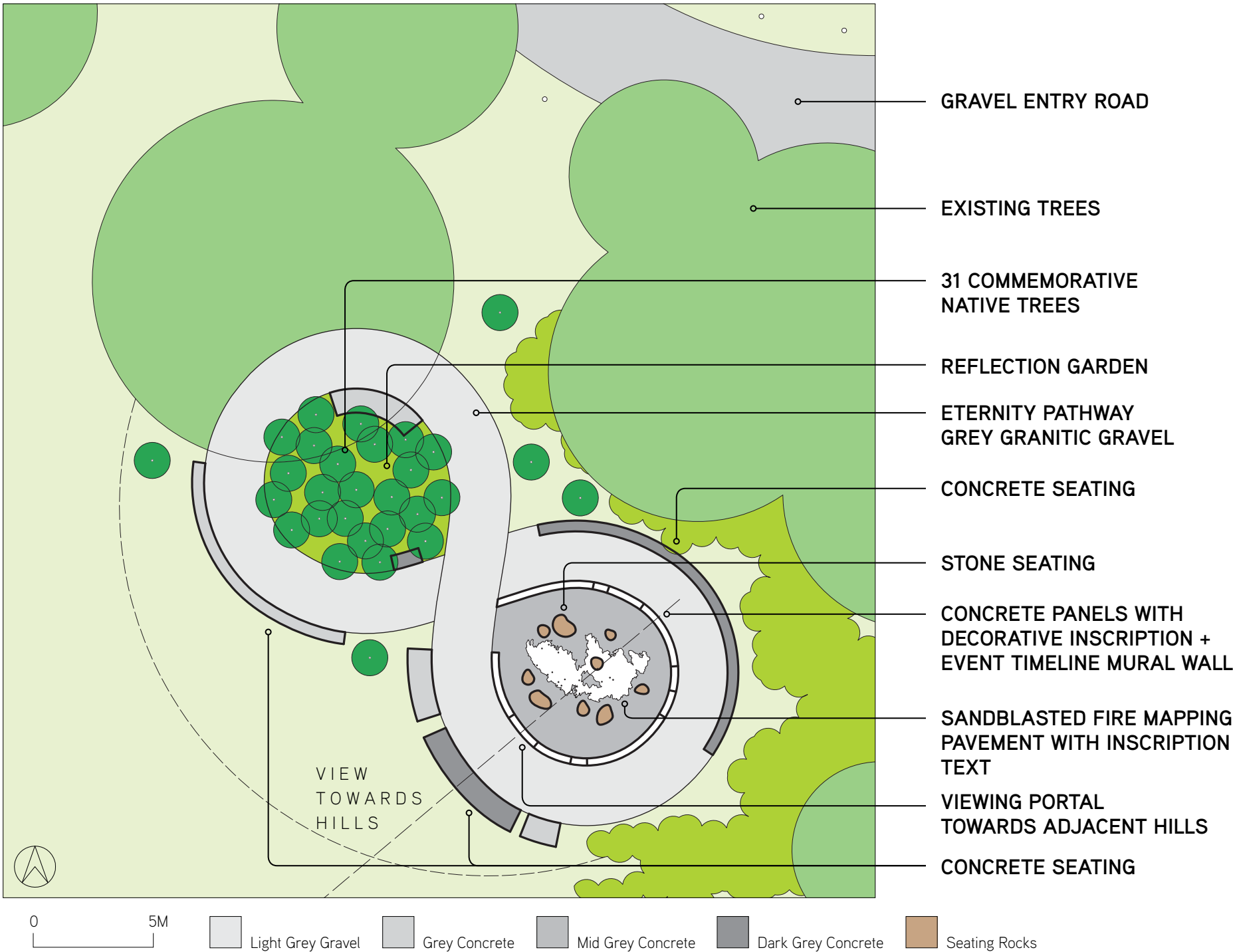


MURRINDINDI
BUSHFIRE
MEMORIALS:
DEVELOPING MEANINGFUL
MEMORIALS FOR THE SIX
COMMUNITIES OF MURRINDINDI
AS PLACES OF
REMEMBRANCE, REGROWTH
AND RENEWAL.

PREFERRED OPTION	01
Plan + Detail	03
Render	04
Reference Images	06

PLAN

Two gathering spaces shaped in eternity provide a flexible memorial space. A copse of tightly spaced trees to the west and an enclosed circular inscription wall to the east. Both spaces are framed by seating opportunities allowing for both enclosed and expansive views. The inscription text on the concrete wall panels depicting a timeline of when the fires reached the community and how many were lost from each community. The concrete floor shows an etched map with the communities located within the Kinglake complex fire map.



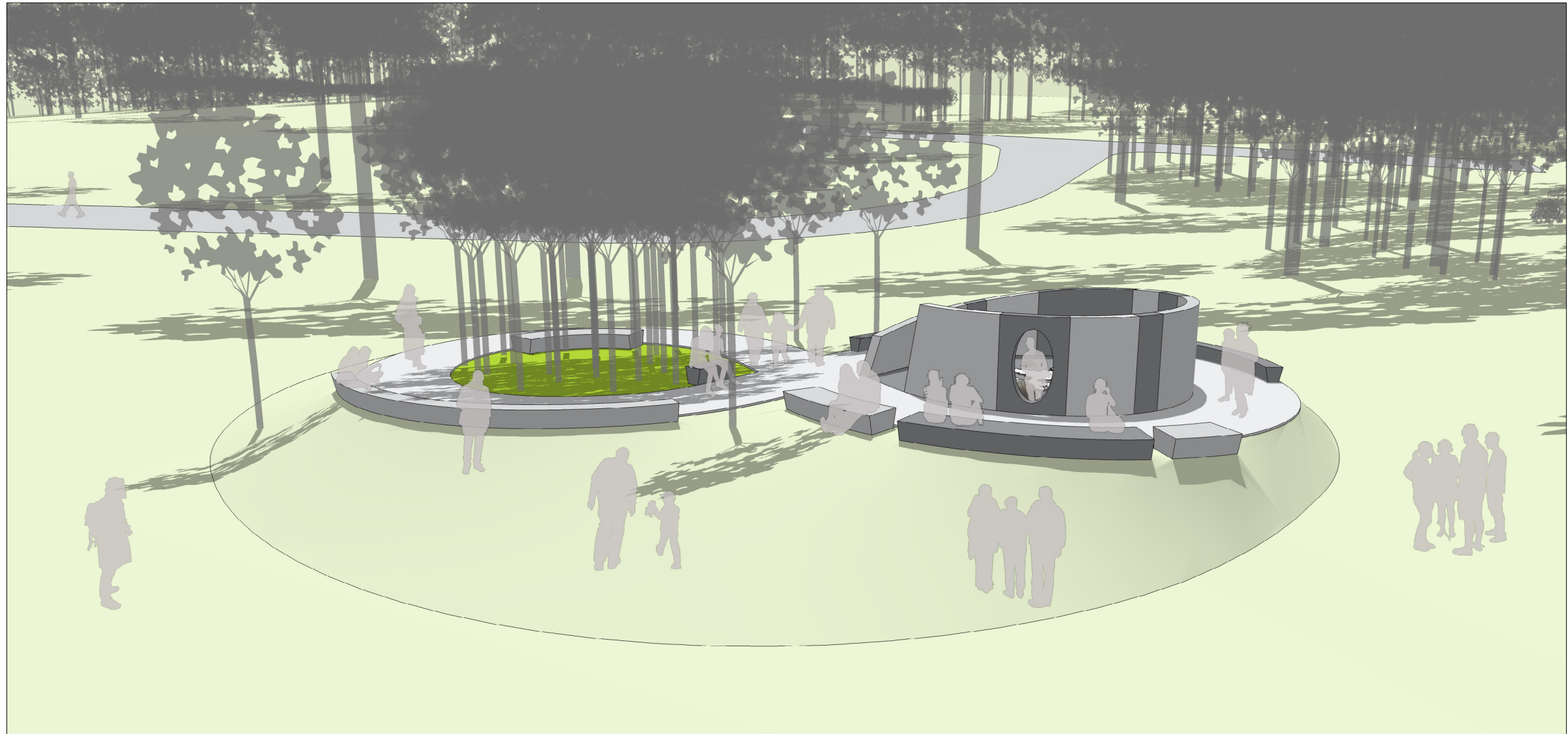
REFLECTIVE GARDEN + INSCRIPTIONS

The two spaces allow flexibility at commemorative events providing ample space for large gatherings. The figure 8 pathway allows for continual flow and movement. The curved mural wall is punctured by an elliptical viewing portal offering views towards the west and the adjacent rolling hills.



VIEW 1

Looking through the copse of gum trees towards the curved inscription wall. The inscription wall tapers in height, while the curved seating is located at the top of an embankment that leads down the site slope.



VIEW 2

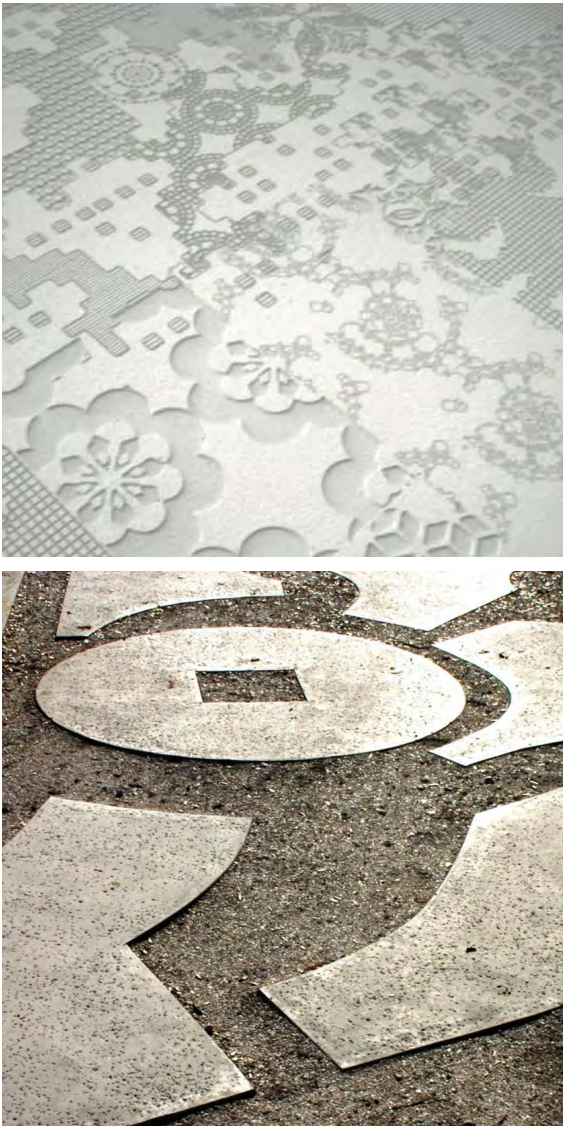
From the south shows the two distinct memorial spaces and their interconnectivity via the surrounding path network. The inscription wall, remembrance garden and adjacent picnic area form a harmonious transition of functional spaces.

REFERENCE IMAGES

INSCRIPTION WALL



DECORATIVE PAVEMENT



EMBANKMENT VEGETATION



REFERENCE IMAGES

Interpretation and storytelling, acknowledgment and remembrance all represented on this curved tapestry of time. Sandblast relief on floors surfaces all nestled within a bed of native groundcovers exploding in a sea of flowering colour.

REFERENCE IMAGES

PORTAL



SURROUNDING PAVEMENT



SEATING ROCKS



FEATURE TREES



REFERENCE IMAGES

Poles of banded colour and interpretive text and inscriptions. Coloured granitic gravels and a series of monolithic rocks nestled within a sea of swaying grasses and limbs with dappled canopy foliage.

CONVIC

CREATE COMMUNITY

UNIT 13, 46-50 REGENT STREET
RICHMOND VIC 3121 AUSTRALIA
T +61 3 9486 9899 F +61 3 9486 9088
CONVIC.COM