

FINAL CONCEPT DESIGN

KINGLAKE WEST BUSHFIRE MEMORIAL

JANUARY 2017

SD01.15092.00



Murrindindi
Shire Council

CONVIC

ACKNOWLEDGEMENTS

Convic Pty Ltd. acknowledge the contributions of all those who participated in the pre-design workshop phase of the Murrindindi Bushfire Memorials, including Murrindindi Shire Council (MSC) staff and Kinglake West residents, community groups and other stakeholders who responded to the various opportunities for input and/or who provided advice and information where required.

KEY DEFINITIONS

Repeated terms and organisational acronyms used throughout this report are defined for clarity as follows:

MSC - Murrindindi Shire Council

MBM - Murrindindi Bushfire Memorials

PREPARED BY

CONVIC

FOR



Murrindindi
Shire Council

MURRINDINDI BUSHFIRE MEMORIALS: DEVELOPING MEANINGFUL MEMORIALS FOR THE SIX COMMUNITIES OF MURRINDINDI AS PLACES OF REMEMBRANCE, REGROWTH AND RENEWAL.

PREFERRED OPTION

Plan + Detail

Render

Reference Images

01

03

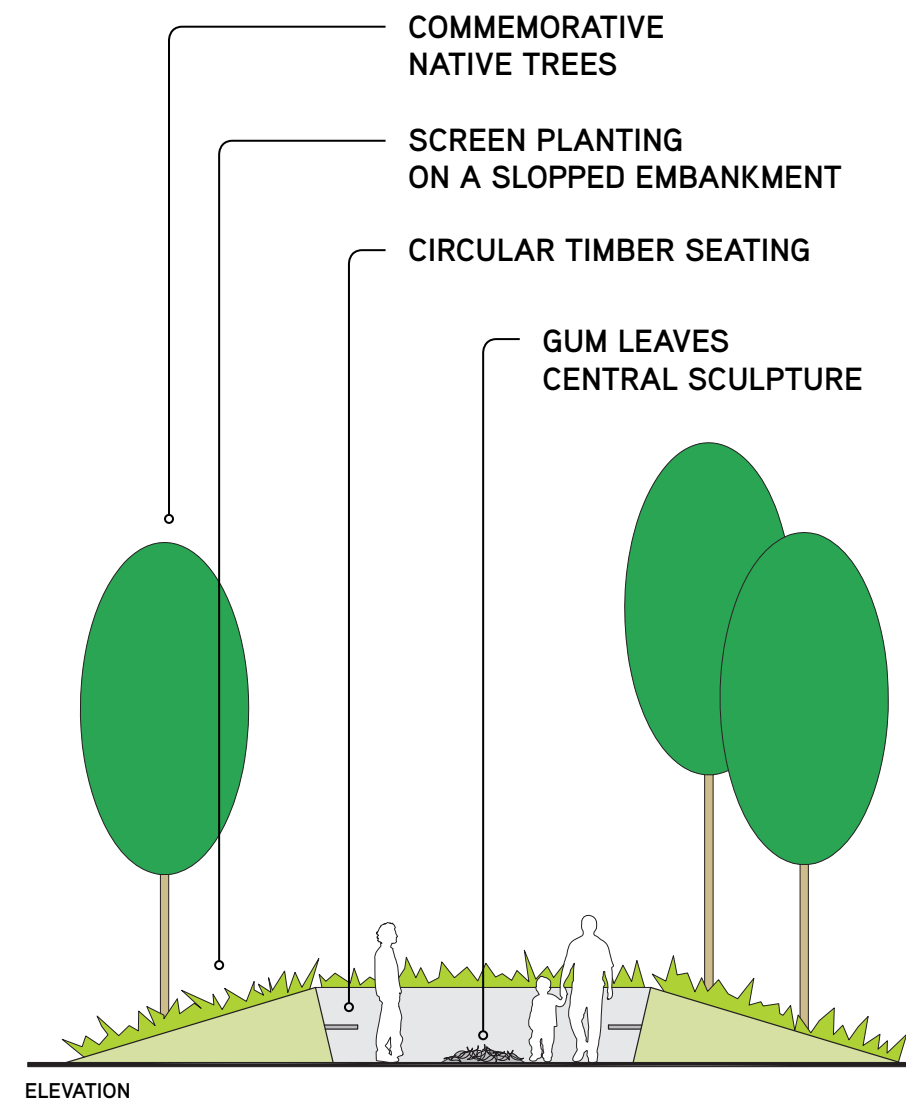
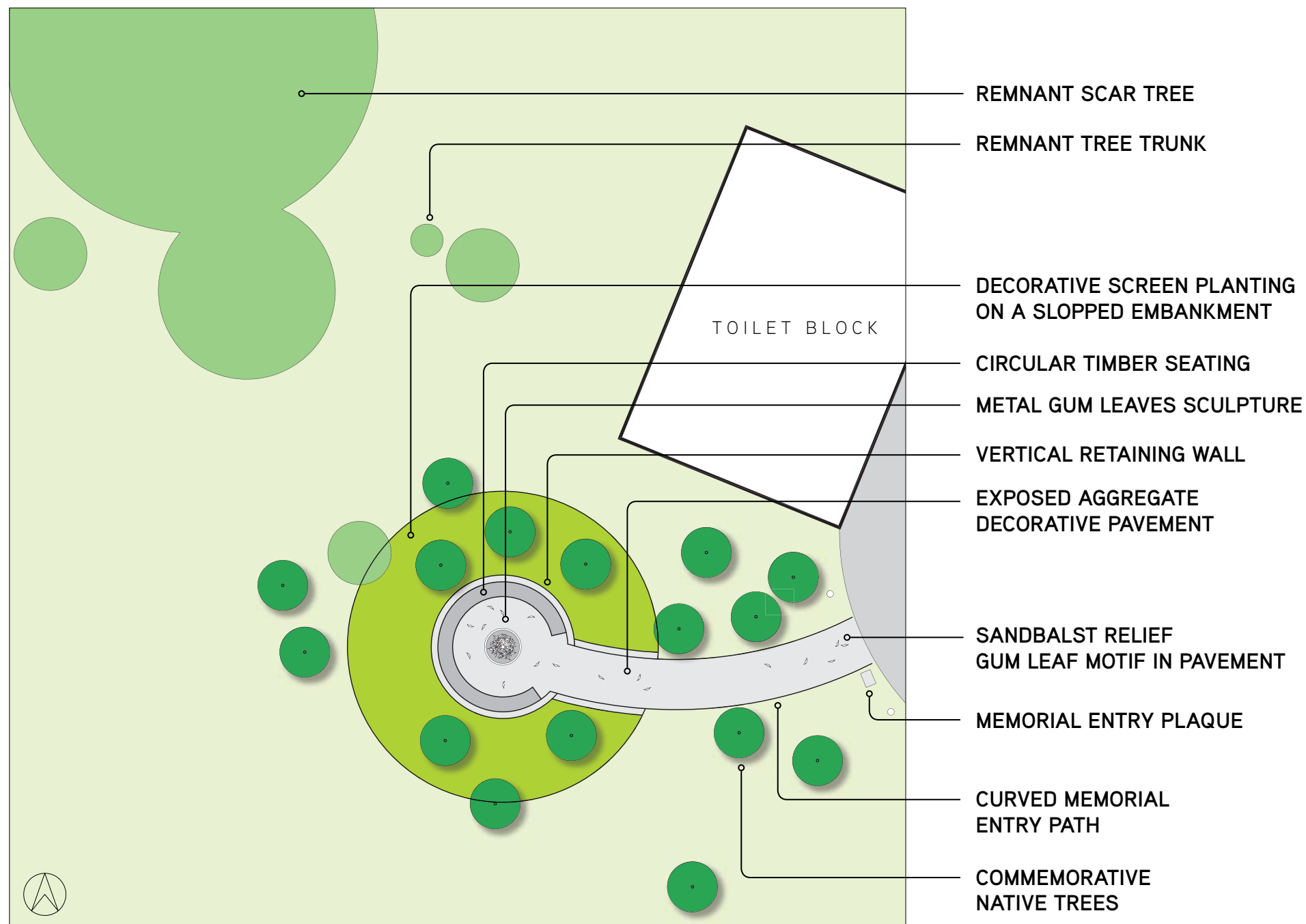
04

06

PLAN + DETAIL

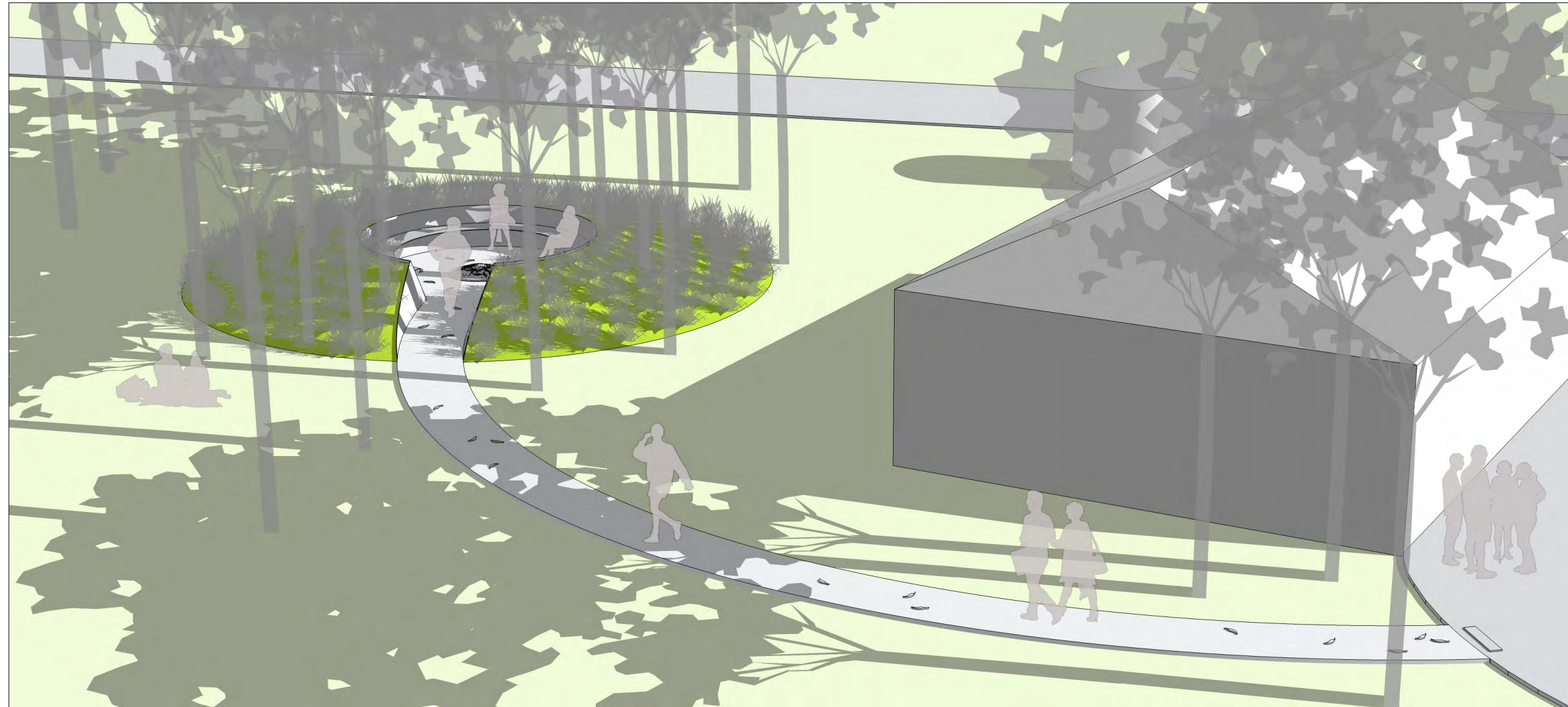
PLAN

A gently sweeping concrete path leads to the intimate memorial space. The concrete path is adorned in sandblast relief motifs of gum leaves scattered randomly on the floor. The memorial space is framed by a raised embankment planted out with native shrubs and groundcovers. 16 trees are scattered around the memorial representing those who passed away. A circular seating area surrounds a central gum leaves sculpture.



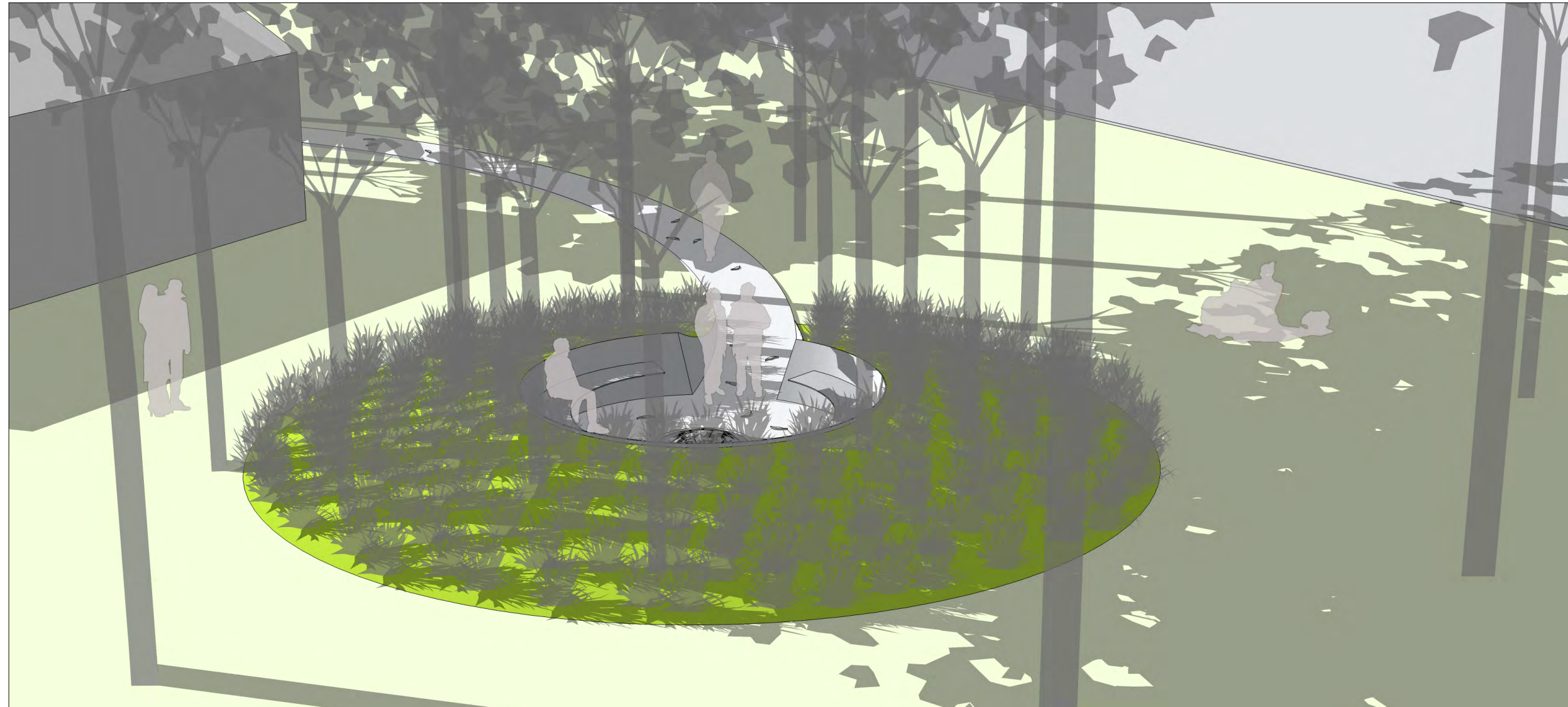
GUM LEAVES CENTRAL SCULPTURE

A gum leaves sculpture is located centrally in the memorial space. The gum leaves represent those who lost their lives in the fires. The gum leaves are wrought in metal and reflect those created both in Pheasant Creek and Strathewen. Blacksmith artisans will be commissioned to create the central feature in a similar style.



VIEW 1

The memorial on approach from the south along the curvilinear entry path. The raised embankment planting and overhead tree canopy provides screening from the nearby street frontages and adjacent toilet block.



VIEW 2

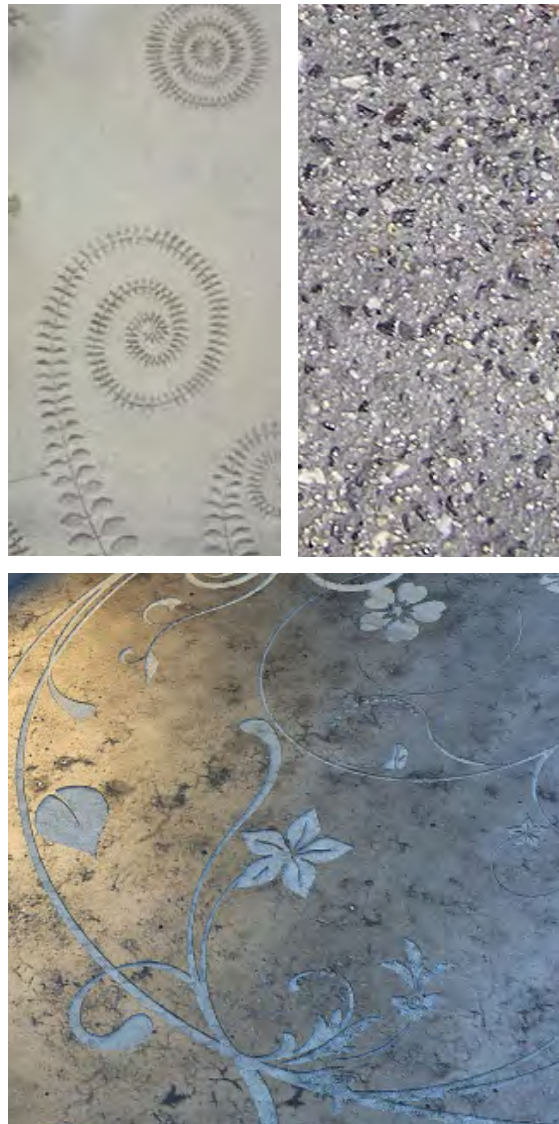
The memorial from the north revealing the intimate nature of the memorial surrounds. Curved timber seating allows for a place to sit and ponder, to reflect and remember loved ones.

REFERENCE IMAGES

CENTRAL GUM LEAVES SCULPTURE



DECORATIVE CONCRETE



CIRCULAR SEATING



VEGETATION



REFERENCE IMAGES

Wrought metal artistry, life like, delicate, almost soft to the touch. Surrounded by a simple but poetic grey concrete fossilised by gum leaf motifs. Smooth timber seating surrounds, sitting amongst native grasses, shrubs and majestic trees above.

THE FINAL CONCEPT DESIGN MAY BE SUBJECT TO REVIEW AND MODIFICATION DURING THE DESIGN DEVELOPMENT AND DOCUMENTATION STAGES TO REFLECT THE NOMINATED FUNDING ALLOCATION (\$25,000) AND IN-KIND COMMUNITY SUPPORT PROVIDED.

BLANK



CONVIC

CREATE COMMUNITY

UNIT 13, 46-50 REGENT STREET
RICHMOND VIC 3121 AUSTRALIA
T +61 3 9486 9899 F +61 3 9486 9088
CONVIC.COM