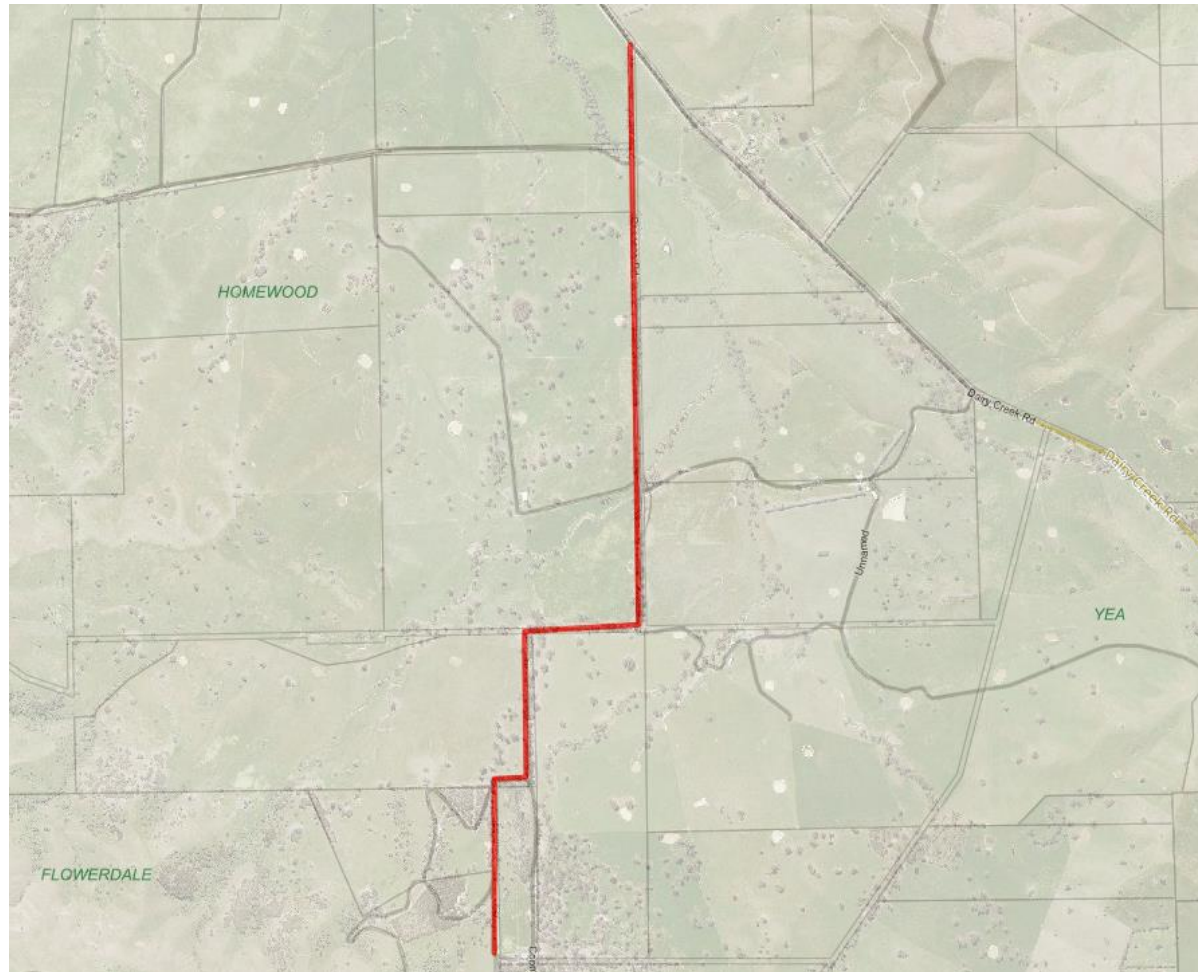
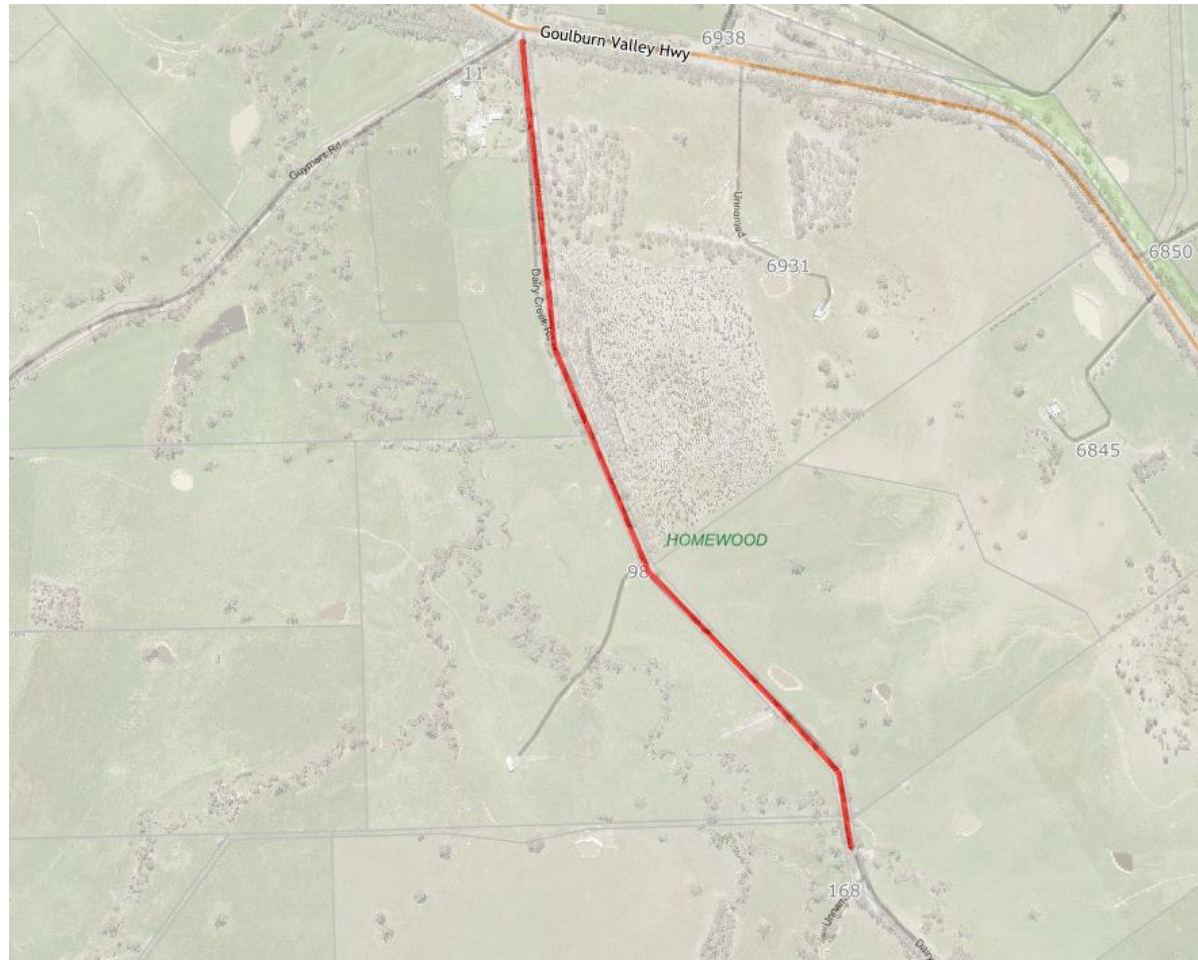


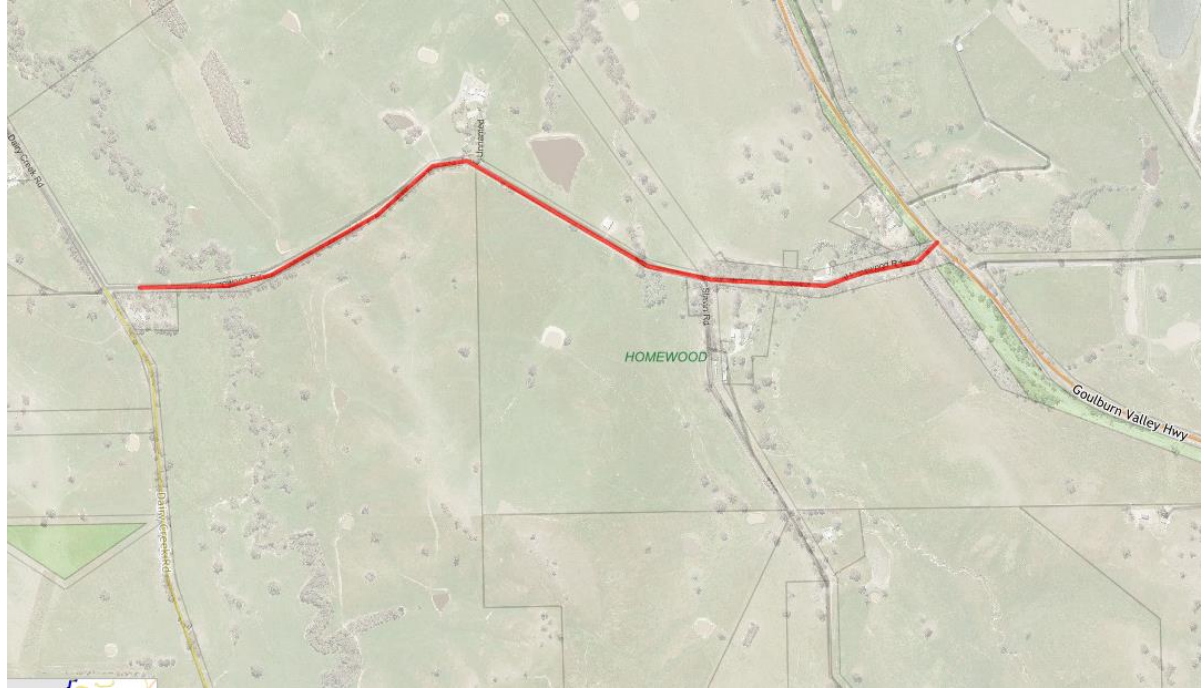
**Homewood**



Segments 2340, 2341, 3040 & 3041- Coonans Rd, Homewood  
Chainage: 0 m Dairy Creek Rd – 3735 m

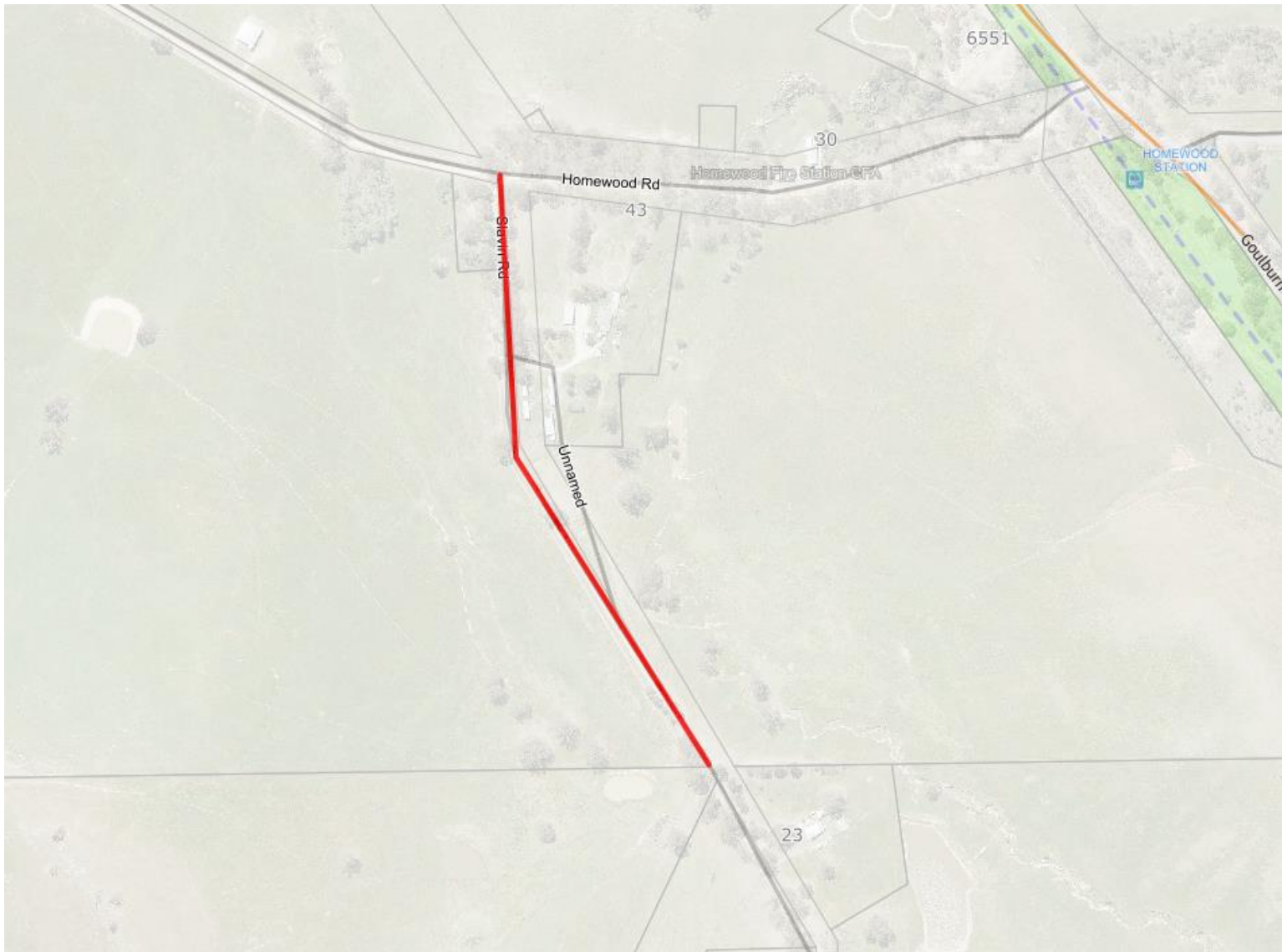


Segments 140 & 2805 – Dairy Creek Road, Homewood  
Chainage: 25m from Goulburn Valley Hwy – 1610m



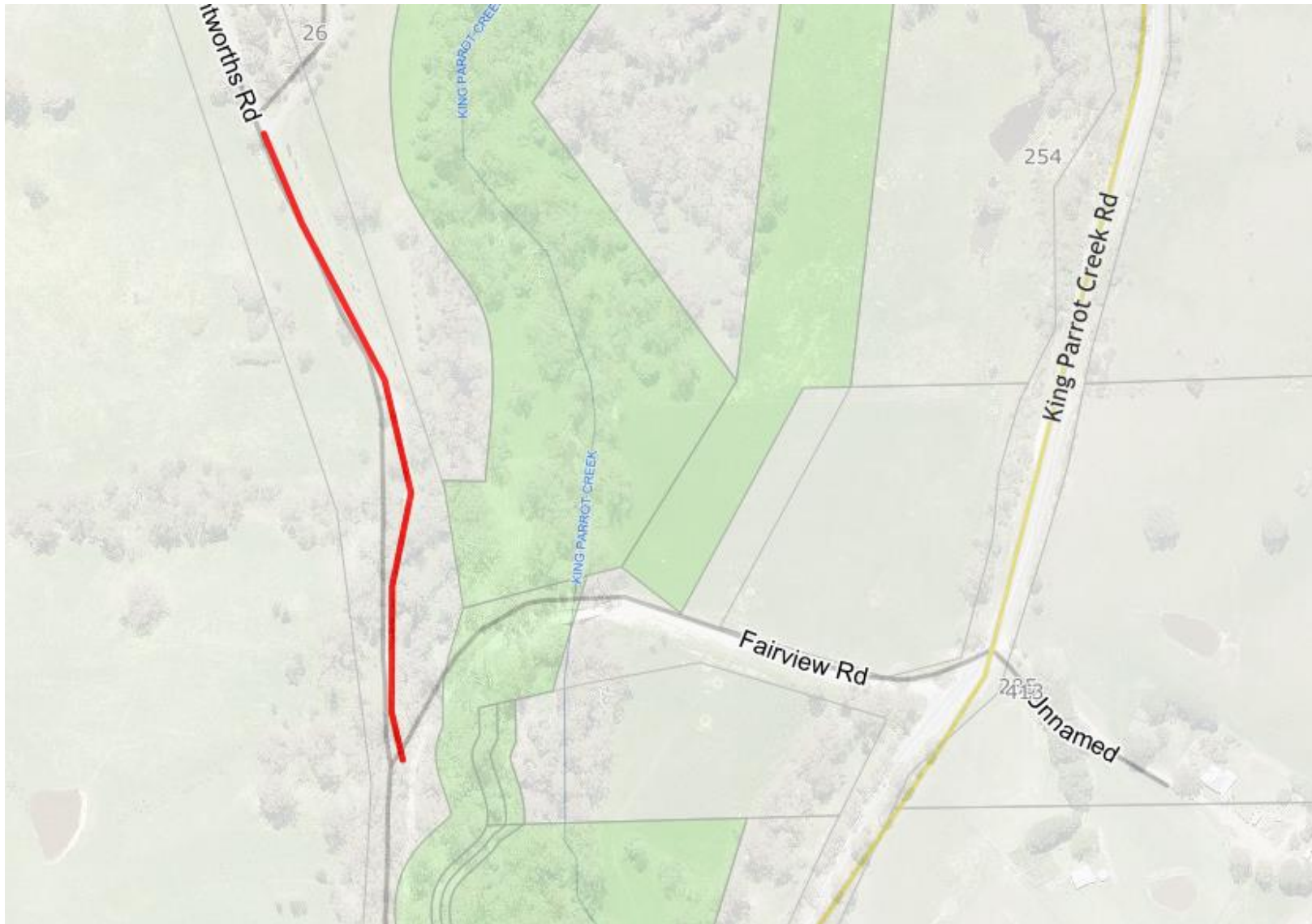
Segments 2081, 2082 & 2937 – Homewood Rd, Homewood  
Chainage: 0m Goulburn Valley Hwy – 2090m





Segments: 2165 & 2166 – Slavin Rd, Homewood  
Chainages: 0m Homewood Rd – 611m

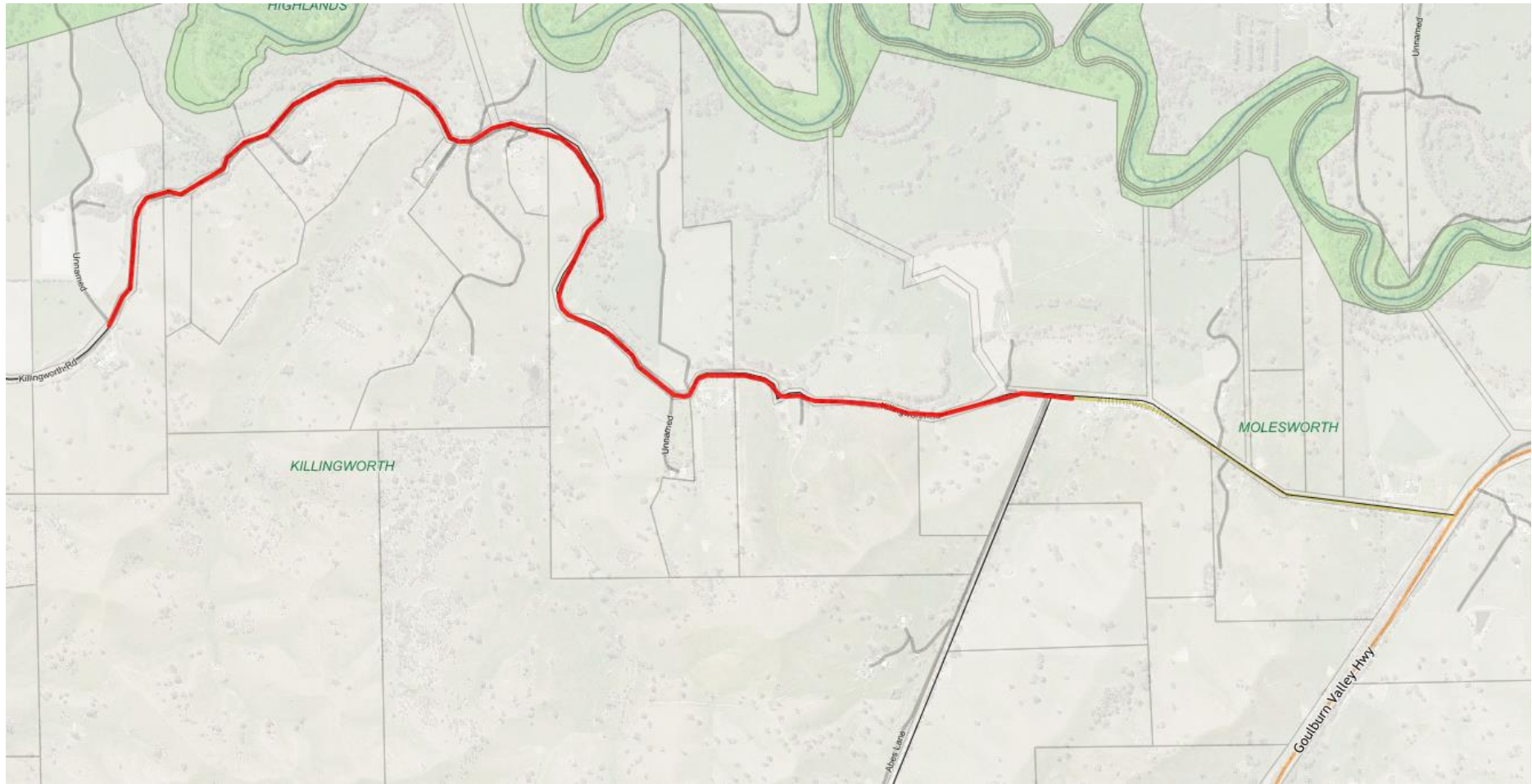
**Kerrisdale**



Segment: 2749 – Wentworths Rd, Kerrisdale  
Chainages: 0m Fairview Rd – 350m

**Killingworth**



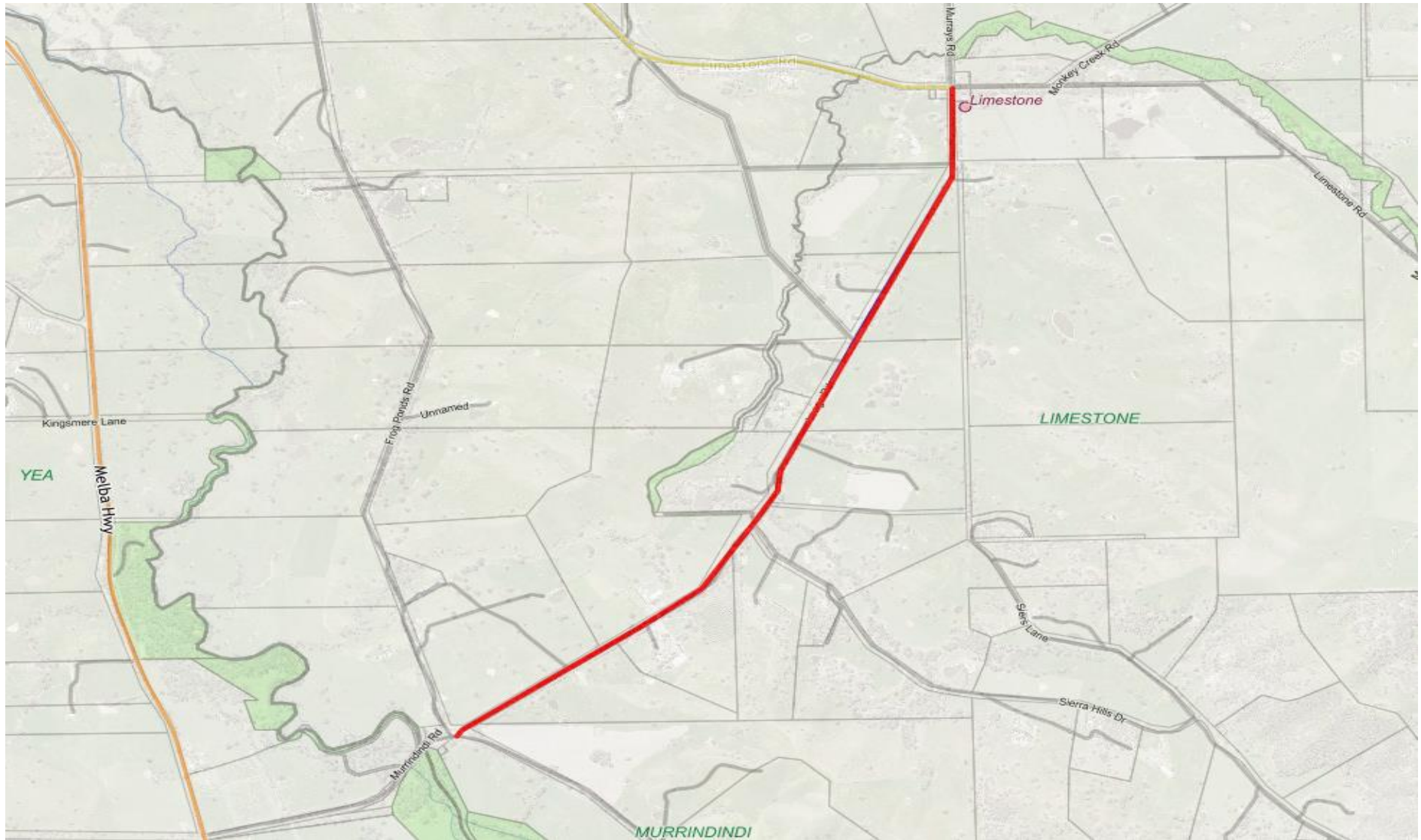


Segments: 2778, 2779, 2780, 2781, 2782 & 2783 – Killingworth Rd, Killingworth  
Chainage: 8000m from Goulburn Valley Hwy Entry (West End) – 13,040m



Segment 2245 – Abes La (South), Killingworth  
Chainage: 0 m Goulburn Valley Hwy – 448 m

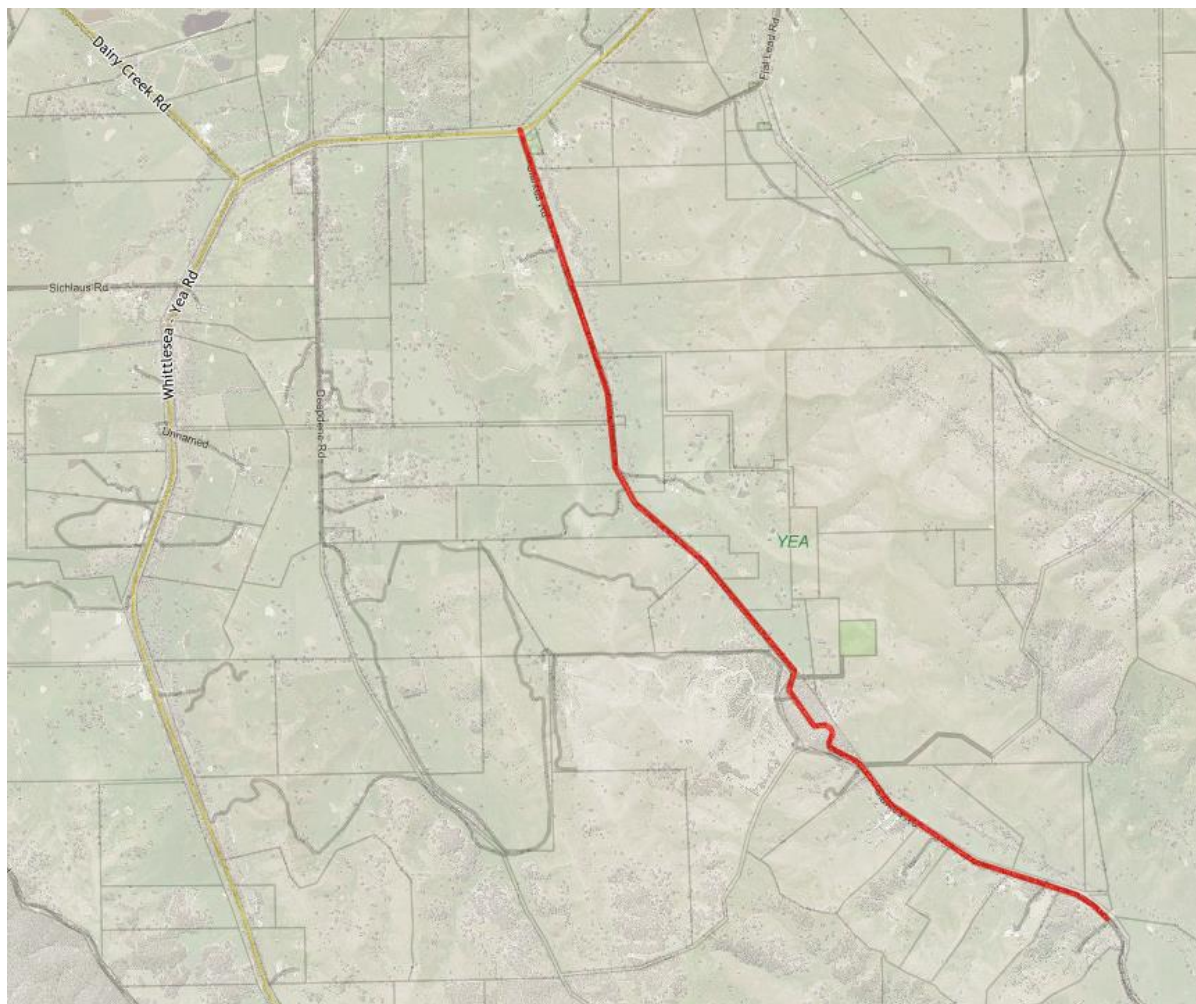
**Limestone**



Segments: 2485, 2486, 3052 & 3051 – Langs Rd, Limestone  
Chainage: 20m from Murrindindi Rd – 3841m (Limestone Rd intersection)

**Yea**





Segments 2327, 2328, 2329, 2330, 2331 & 3054 – Clarks Rd, Yea  
Chainage: 0 m Whittlesea-Yea Rd – 6085 m