

Murrindindi
Shire Council

2018-19 Sealed Roads Program

Alexandra



Segment: 826 – Wattle St, Alexandra
Chainage: 0m Goulburn Valley Hwy – 160m Nihil St

Eildon



Segment: 250 – Girdwood Pde, Eildon
Chainage: 0m Hillside Ave South – 180 m



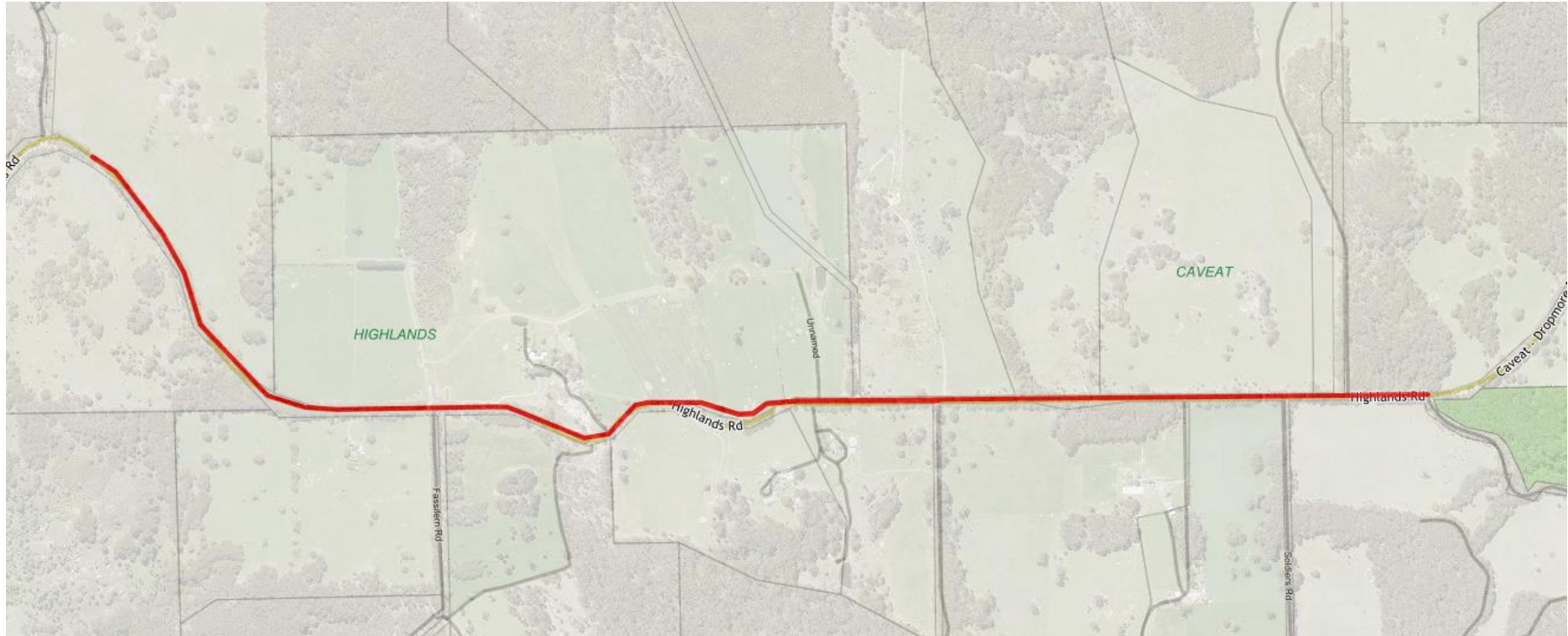
Segment: 289 – High St, Eildon
Chainage: 0m Park Av – 211m Park Ave North

Gobur



Segment: 878 – Yarck Rd, Gobur
Chainage: 15,185m from Maroondah Hwy – 16,065m

Highlands



Segments: 335 – Highlands Rd, Highlands
Chainage: 8545 m from Highlands Rd Council Boundary – 12,820m start of Caveat-Dropmore Rd



Segment 2791 – Ghin Ghin Rd, Highlands
Chainage: 13,260 m from Goulburn Valley Hwy – 14,790 m

Murrindindi



Segment: 521 – Murrindindi Rd, Murrindindi
Chainage: 0 m Old Murrindindi Rd – 1,040m

Yarck



Segments: 359 & 360 – Kanumbra-Gobur Rd, Yarck
Chainage: 00 Yarck Rd – 4,835m

Yea



Segment: 428 – Lyons St, Yea
Chainage: 00 Pelissier St – Oliver St



Segments: 129, 494 & 495 – Miller St, Yea
Chainage: Melba Hwy – Whatton PI



Segments: 507 & 508 - Moyle St, Yea
Chainage: 0m Smith St - 785m



Segments: 569 & 570 - Nolan St, Yea
Chainage: 0m High St – Craigie St



Segments: 454 & 576 - Oliver St, Yea
Chainage: 0m Melba Hwy – 65 m & Rattray St – Welch St



Segments: 759 & 760 – The Parade, Yea
Chainage: 0m Pelissier St – Meara St



Segment: 859 –Whatton Place, Yea
Chainage: 0m Goulburn Valley Hwy – 177m Miller St



Segment 307 – High St, Yea
Chainage: Nolan St – Giffard St



Segment 151 – Duke St, Yea
Chainage: 0m Abeckett St – 222m



Segment 130 – Craigie St, Yea
Chainage: Webster St – Nolan St