

February Events



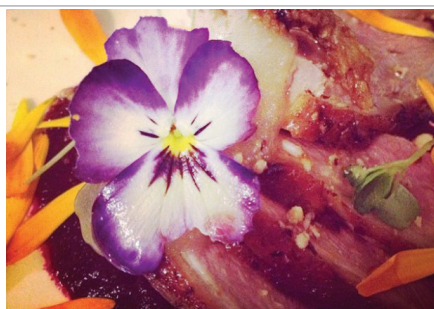
Saturday 18 February
Formelles Dinner at Fairweather Farmgate

Fairweather Farmgate, 1556 Goulburn Valley Hwy, Thornton
A chef's menu that will delight the senses and make for an unforgettable evening. There are no rules as the chef gets to use the techniques, methods and ingredients that brought him to Australia and work in Chef's Hat restaurants. Limited seats, bookings essential. Fully licensed.
www.fairweatherfarmgate.com/event/formelles-formal-dinner/
fairweather.farmgate@gmail.com 0425 773 490



Sunday 19 February
Long Lazy Summer Lunch

Holmesglen at Eildon, 92 Moore Rd, Eildon
Finish summer with breathtaking views and great friends! Graze through fresh local produce and reflect upon the summer just been. Three courses and live music. Bookings essential. Accommodation available.
www.holmesglen.edu.au/eildon
eildon@holmesglen.edu.au 03 5774 2631



Friday 24 February
Facile Dinner at Fairweather Farmgate

Fairweather Farmgate, 1556 Goulburn Valley Hwy, Thornton
A seasonal menu, sometimes the dishes are plated, sometimes shared, inspired by classic cuisine. Bookings essential, limited seating, fully licensed. Price range varies from two to three courses.
www.fairweatherfarmgate.com/event/facile-dinner/
fairweather.farmgate@gmail.com 0425 773 492



.GREAT VICTORIAN. RAIL TRAIL

Tallarook-Yea-Alexandra-Mansfield

Whether you're seeking adventure or looking to get back to nature, the Great Victorian Rail Trail is for you. This easily accessible, varied and unique rail trail offers close proximity to heritage classified rivers and majestic valleys, lakes and mountains. So strap on your daypack and head for the hills.

The trail is Victoria's longest rail trail and spans 134km from Tallarook through Yea to Mansfield, with a link between Cathkin and Alexandra. You'll be able to explore the rail trail on a bike, on foot or on horseback. Located less than one hour from Melbourne, the trail meanders through beautiful countryside following the Goulburn River at Tallarook and passes through the Trawool Valley, classified by the National Trust for its scenic beauty.

You can take a ride through the historic 200 metre long Cheviot tunnel and you may be lucky enough to arrive at the old Alexandra Station on a day that the Alexandra Timber Tramway and Museum operates.

The trail traverses the Mitchell, Murrindindi and Mansfield Shires, connecting towns and communities including Tallarook, Trawool, Kerrisdale, Homewood, Yea, Molesworth, Cathkin, Alexandra, Koriella, Yarck, Kanumbra, Merton, Woodfield, Bonnie Doon, Maindample and Mansfield, making it one of the longest trails in Australia.

Further information visit www.greatvictorianrailtrail.com.au
1800 RTRAIL (787 245)



THE **HEART**
OF VICTORIA