



# Replacement of Break O'Day Road Bridge

## Murrindindi Shire Council - Wednesday 5 April Meeting

Vito Albicini, Director Assets & Development  
Peter Bain, Manager Sustainability & Assets

# Agenda

- Why are we here?
- Discuss different approaches to replace bridge
- Sharing our Dilemma
- Community Concerns
- What's next?
- Q & A session

# Why are we here?

**Community Meeting**  
27 October 2022

**Glenburn Community Meeting**  
5 April 2023

**Glenburn Nominated Group Meeting**  
21 March 2023

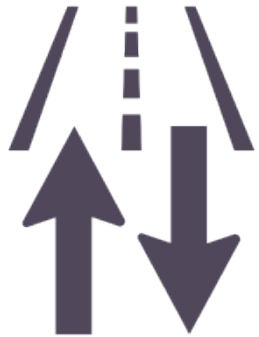
**Council decision on way forward for project at Scheduled Council Meeting**  
26 April 2023



# Why replace the bridge?

- The bridge is **old and not fit for purpose**.
- The bridge only allows **one lane of traffic**.
- The bridge **does not** meet current and future needs.
- The bridge is **susceptible** to impacts from potential major flooding
- The bridge **excludes** vehicles above 15 tonne (B-Doubles, etc)

# Benefits of a new bridge



Two lane access,  
unlimited loading  
providing better  
service and safety  
for road users



Improved  
resilience in the  
face of extreme  
weather events  
such a flooding



A bridge with a  
100 year life  
expectancy

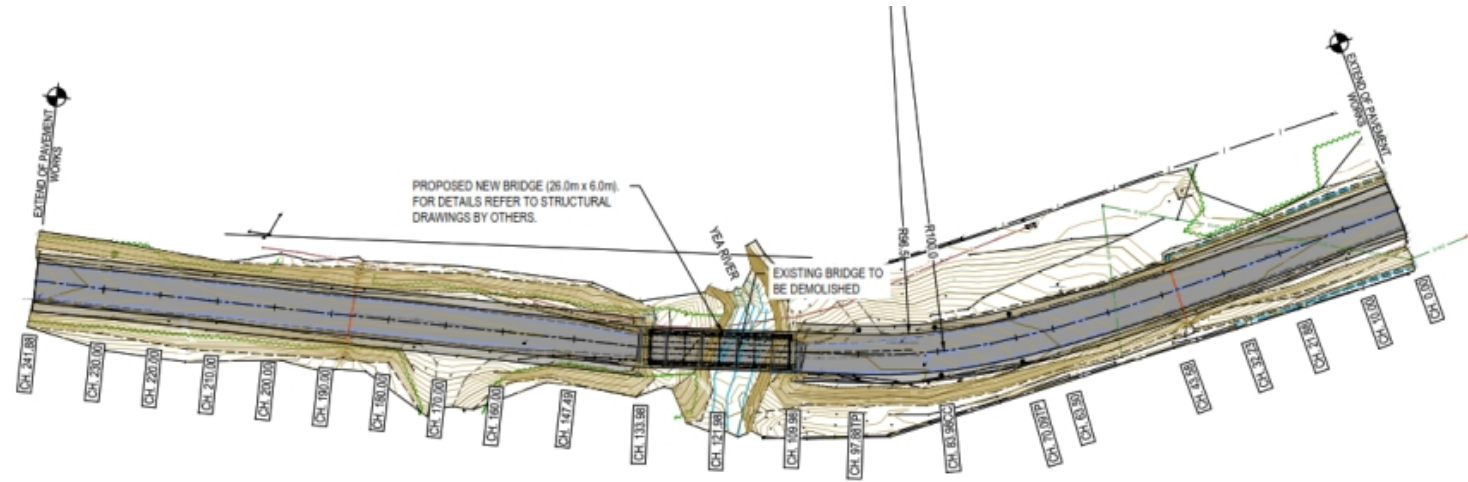


Reduced maintenance,  
leading to fewer  
disruptions for  
community and reduced  
costs for Council

# Is there an another approach?

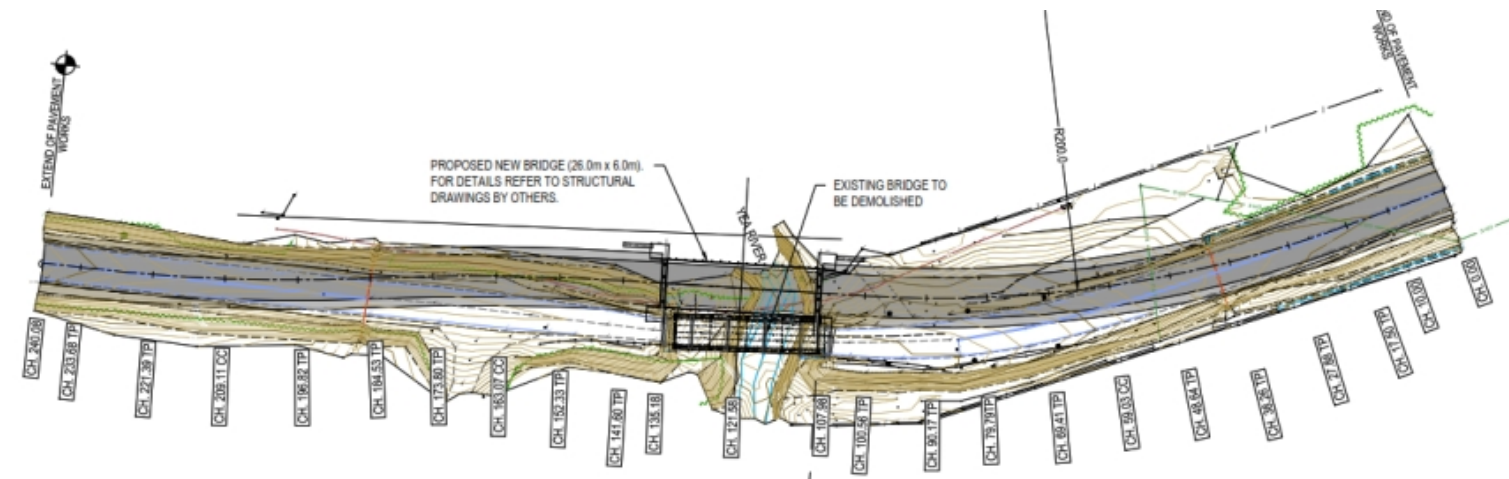
## Alignment 1

Replace Bridge on Existing Alignment



## Alignment 2

Replace Bridge on Alternate Alignment



# The Pros and Cons

## Alignment 1 (existing)

### Pros

- 9 Week Program (fastest)
- Most Cost-Effective Option
- Unlimited load limit
- Construction can commence as early as May 2023

### Cons

- Anticipated 6 Week Road Closure
- Detours in place of up to 40 minutes, depending on route of travel

## Alignment 2 (alternative)

- No Road Closure, with a level of access retained for residents and road users

- 16 Week Program (slowest option)
- Least Cost-Effective Option (Additional \$450,000 is required to fund this option)
- Delays of up to 15 minutes for road users
- Existing bridge load limit (15T)
- Delayed Project Start Date (as late as July 2023)

**Our Dilemma:** How do we replace the bridge, while minimising the impact on the community, within our existing budget for this project?

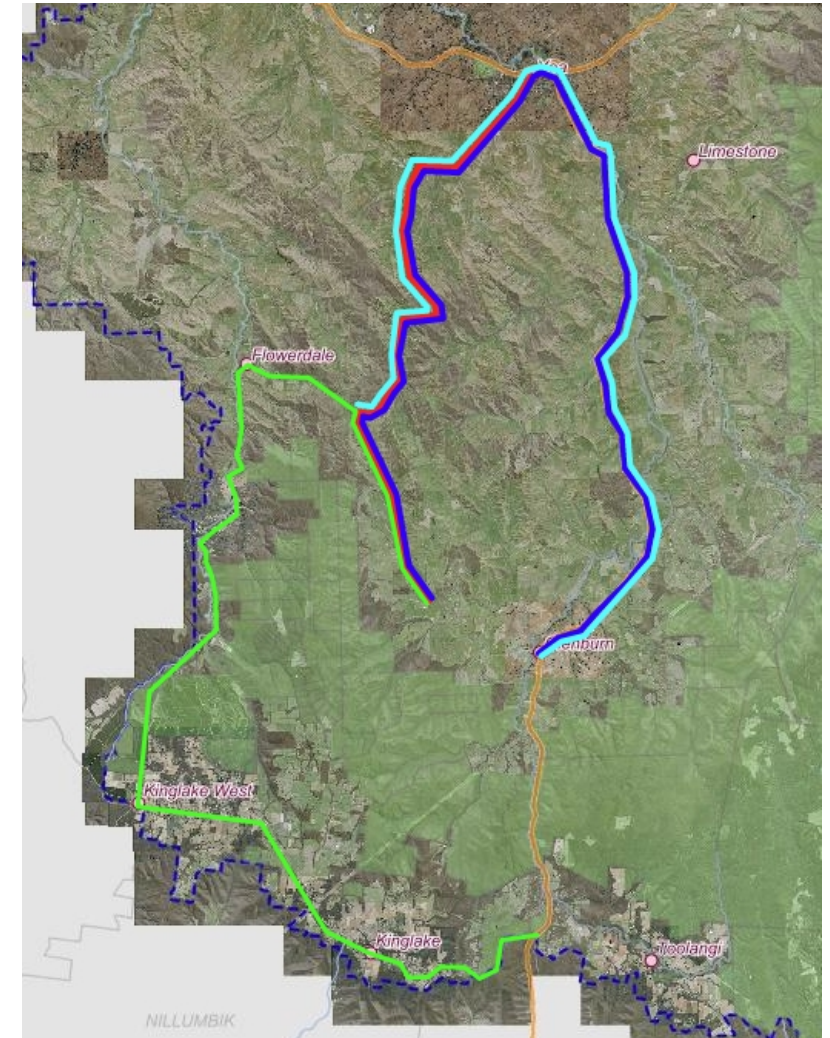


# Community concerns – what we heard

## Personal Time Impacts

- Longer commutes
- Additional stress

Route	Current	Detour	Detour Difference	
Break O’Day Road to Castella	11 mins/ 15 km	47 mins/60 km	36 mins	45 km
Break O’Day Road to Yea	22 mins/ 33 km	22 mins/29 km	0 mins	- 4 km
Break O’Day Road to Glenburn	3 mins/4 km	42 mins/ 58 km	39 mins	54 km
Flowerdale to Glenburn	13 mins/ 18 km	39 mins/54 km	26 mins	36 km
<i>*assumed driving to conditions of the road</i>				



# Community concerns – what we heard

## Personal Cost Impacts

- Long detours, extra kms travel
- Cost of fuel
- Financial impact



# Community concerns – what we heard

- **Public transport impacts**
  - Impacts to bus route and drop-off/pick up locations and times



# Community concerns – what we heard

- **Personal risk to safety**
  - Longer detours
  - Early/late travel times
  - Safety risks due to weather conditions and wildlife



# Community concerns – what we heard

- **Emergency service impacts**
  - Access for CFA, Ambulance, SES, etc.



# Community concerns – what we heard

- Ability for works to be delivered, without exceeding a 6 week closure period



# Timeline and anticipated next steps

*(based on proceeding with existing alignment)*



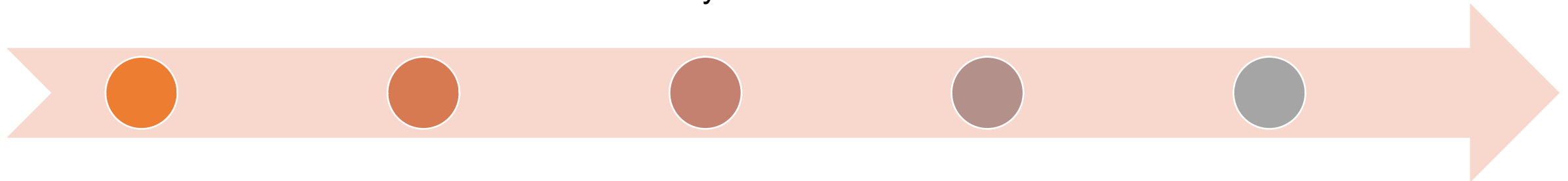
**Glenburn  
Community  
Meeting** 5 April  
2023

**Construction  
commences  
with site  
establishment**  
15 May 2023

**Expected  
Project  
completion**  
July/August  
2023

**Decision on  
way forward for  
project at  
Scheduled  
Council  
Meeting**  
26 April 2023

**Road closure  
while bridge is  
replaced (6  
week closure)**  
22 May 2023



# Questions and Answers session

