

REV	REVISION	DES	DWG	CHK	DATE
C	REDUCTION CENTRE MEDIUM AUL ROBERTSON RD	NJB	NJB	AR	28/07/20
B	REDUCTION IN INITIAL SCOPE	NJB	NJB	AR	24/07/20
A	AS SUBMITTED TO COUNCIL FOR COMMENT	NJB	NJB	AR	22/06/20



Tomkinson Group

HEAD OFFICE: 57 MYERS STREET
BENDIGO PH 03 5445 8700
ABN 11 103 336 358
WWW.TOMKINSON.COM

ISO 9001:2015
Quality Management
FSS2408

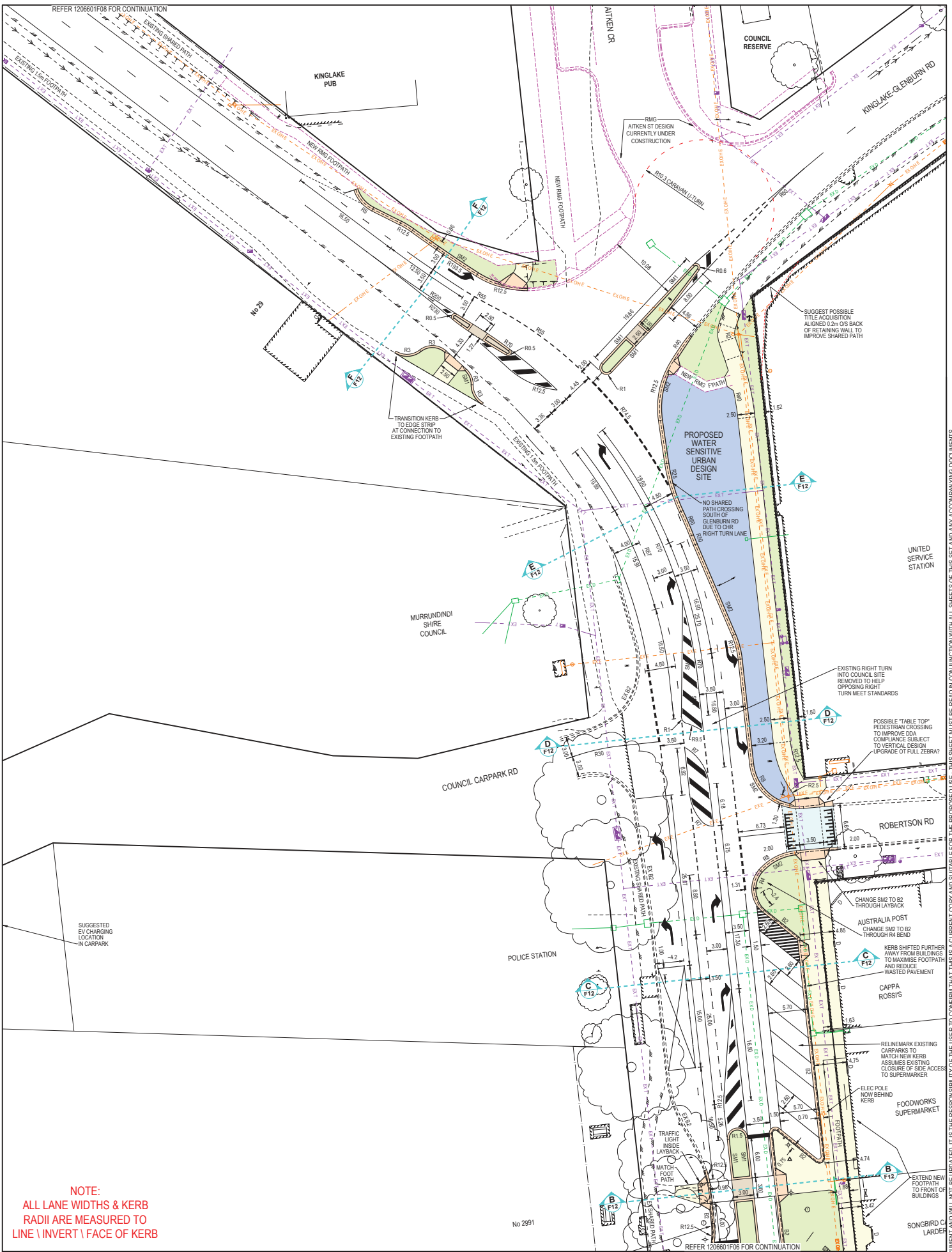
Murrindindi Shire Council

© COPYRIGHT
THE INFORMATION CONTAINED ON THIS DRAWING IS THE INTELLECTUAL PROPERTY OF TOMKINSON GROUP. COPYING OR USING THIS DRAWING IN WHOLE OR IN PART WITHOUT THE EXPRESS WRITTEN PERMISSION OF TOMKINSON GROUP INFRINGES COPYRIGHT.

12.5 0 12.5 25 37.5 50 62.5
SCALE 1:1,250
LENGTHS ARE IN METRES - PAPER SIZE A3

KINGLAKE STREETScape RENEWAL
KINGLAKE
OVERALL DEVELOPMENT PLAN WITH SURVEY
MURRINDINDI SHIRE COUNCIL
COUNCIL REF: SF/2410
DWG STATUS: **PRELIMINARY**
PROJECT & DWG No: 1206601F05 / 19

NOTE: THIS IS AN UNCONTROLLED DOCUMENT AND WILL NOT BE UPDATED. IT IS THE RESPONSIBILITY OF THE USER TO CONFIRM THAT THIS IS A CURRENT COPY AND SUITABLE FOR THE PROPOSED USE. THIS SHEET MUST BE READ IN CONJUNCTION WITH ALL SHEETS OF THIS SET AND ANY ACCOMPANYING DOCUMENTS.
PLOT DATE: 28/07/2020 FILE: C:\120 DAT\120MBCO-1255\01\2086 - MURRINDINDI SHIRE COUNCIL KINGLAKE - 1206601F05\CURRENT\1206601F05.DWG



NOTE:
ALL LANE WIDTHS & KERB
RADII ARE MEASURED TO
LINE \ INVERT \ FACE OF KERB

REV	REVISION	DES	DWG	CHK	DATE
C	REDUCTION CENTRE MEDIUM AUL ROBERTSON RD	NJB	NJB	AR	28/07/20
B	REDUCTION IN INITIAL SCOPE	NJB	NJB	AR	24/07/20
A	AS SUBMITTED TO COUNCIL FOR COMMENT	NJB	NJB	AR	22/06/20



Tomkinson Group
 HEAD OFFICE: 57 MYERS STREET
 BENDIGO PH 03 5445 8700
 ABN 11 103 336 358
 WWW.TOMKINSON.COM

ISO 9001:2015
 Quality Management
 FSS2408

Murrindindi Shire Council

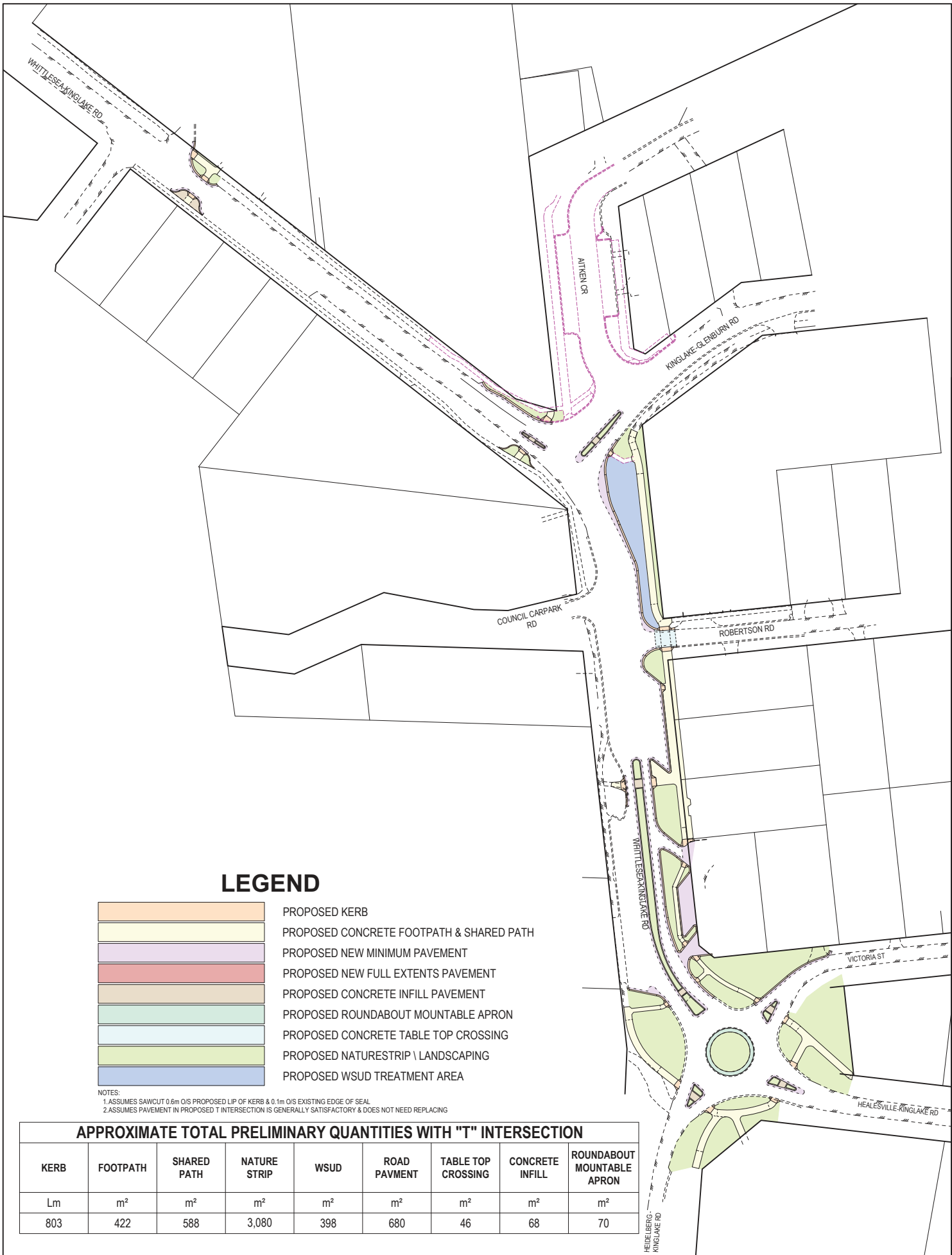
© COPYRIGHT
 THE INFORMATION CONTAINED ON THIS DRAWING IS THE INTELLECTUAL PROPERTY OF TOMKINSON GROUP. COPYING OR USING THIS DRAWING IN WHOLE OR IN PART WITHOUT THE EXPRESS WRITTEN PERMISSION OF TOMKINSON GROUP INFRINGES COPYRIGHT.

**KINGSLAKE STREETSCAPE RENEWAL
 KINGSLAKE
 1:500 DETAIL PLAN (2 OF 3)**

MURRINDINDI SHIRE COUNCIL
 COUNCIL REF: SF2410

DWG STATUS: **PRELIMINARY** PROJECT & DWG No: 1206601F07 / 19

NOTE: THIS IS AN UNCONTROLLED DOCUMENT AND WILL NOT BE UPDATED. IT IS THE RESPONSIBILITY OF THE USER TO CONFIRM THAT THIS IS THE CURRENT COPY AND SUITABLE FOR THE PROPOSED USE. THIS SHEET MUST BE READ IN CONJUNCTION WITH ALL SHEETS OF THIS SET AND ANY ACCOMPANYING DOCUMENTS. PLOT DATE: 28/07/2020 FILE: C:\120 DAT\1206600-125501\12066-1\MURRINDINDI SHIRE COUNCIL KINGSLAKE STREETSCAPE RENEWAL CURRENT\12066-1\FUNCTIONAL PLANS REV\CDWG



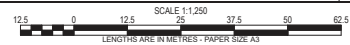
LEGEND

	PROPOSED KERB
	PROPOSED CONCRETE FOOTPATH & SHARED PATH
	PROPOSED NEW MINIMUM PAVEMENT
	PROPOSED NEW FULL EXTENTS PAVEMENT
	PROPOSED CONCRETE INFILL PAVEMENT
	PROPOSED ROUNDABOUT MOUNTABLE APRON
	PROPOSED CONCRETE TABLE TOP CROSSING
	PROPOSED NATURESTRIP \ LANDSCAPING
	PROPOSED WSUD TREATMENT AREA

NOTES:
 1. ASSUMES SAWCUT 0.6m O/S PROPOSED LIP OF KERB & 0.1m O/S EXISTING EDGE OF SEAL.
 2. ASSUMES PAVEMENT IN PROPOSED T INTERSECTION IS GENERALLY SATISFACTORY & DOES NOT NEED REPLACING

APPROXIMATE TOTAL PRELIMINARY QUANTITIES WITH "T" INTERSECTION

KERB	FOOTPATH	SHARED PATH	NATURE STRIP	WSUD	ROAD PAVEMENT	TABLE TOP CROSSING	CONCRETE INFILL	ROUNDABOUT MOUNTABLE APRON
Lm	m ²	m ²	m ²	m ²	m ²	m ²	m ²	m ²
803	422	588	3,080	398	680	46	68	70



C	REDUCTION CENTRE MEDIAN AUL ROBERTSON RD	NJB	NJB	AR	28/07/20
B	REDUCTION IN INITIAL SCOPE	NJB	NJB	AR	24/07/20
A	AS SUBMITTED TO COUNCIL FOR COMMENT	NJB	NJB	AR	22/06/20
REV	REVISION	DES	DWG	CHK	DATE



Tomkinson Group

HEAD OFFICE: 57 MYERS STREET
 BENDIGO PH 03 5445 5700
 A/N 11 103 336 358
 WWW.TOMKINSON.COM

ISO 9001:2015 Quality Management

FSS20408

Murrindindi Shire Council

© COPYRIGHT
 THE INFORMATION CONTAINED ON THIS DRAWING IS THE INTELLECTUAL PROPERTY OF TOMKINSON GROUP. COPIES OR USES THIS DRAWING IN WHOLE OR IN PART WITHOUT THE EXPRESS WRITTEN PERMISSION OF TOMKINSON GROUP INFRINGES COPYRIGHT

KINGLAKE STREETScape RENEWAL
KINGLAKE
APPROXIMATE QUANTITIES FULL SITE
 MURRINDINDI SHIRE COUNCIL
 COUNCIL REF: SF/2410
 DWG STATUS: **PRELIMINARY**
 PROJECT & DWG No: 1206601F11 / 19

NOTE: THIS IS AN UNCONTROLLED DOCUMENT AND WILL NOT BE UPDATED. IT IS THE RESPONSIBILITY OF THE USER TO CONFIRM THAT THIS IS A CURRENT COPY AND SUITABLE FOR THE PROPOSED USE. THIS SHEET MUST BE READ IN CONJUNCTION WITH ALL SHEETS OF THIS SET AND ANY ACCOMPANYING DOCUMENTS. PLOT DATE: 28/07/2020 FILE: C:\120 DAT\10\MBGO-125501\2086 - MURRINDINDI SHIRE COUNCIL KINGLAKE - 1348ENG00\CURRENT\12066 FUNCTIONAL PLANS REV.C.DWG