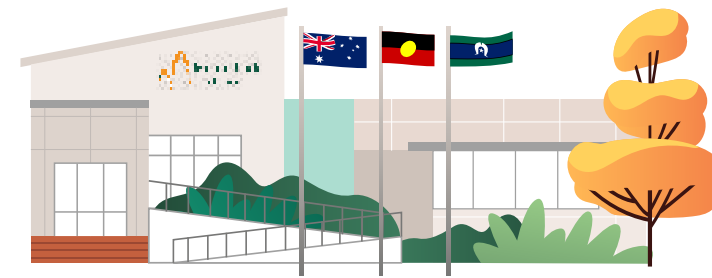


COUNCIL



- Elected Councillors
- Communications
- Community Engagement
- Governance and Risk
- People and Culture
- Customer Service
- Finance
- Information Technology and Digital Innovation

COMMUNITY WELLBEING



- Emergency Management, Recovery and Business Continuity
- School Crossings
- Community Facilities
- Access, Inclusion and Diversity
- Reconciliation
- Service Access and Connection
- Community Planning
- Gender Equity and Family Violence Prevention
- Community Safety and Local Laws
- Grants and Sponsorships
- Community Development
- Health and Wellbeing Planning

FAMILY AND YOUTH



- Maternal and Child Health Services
- Youth
- Parent Early Education Partnership (PEEP) Program
- Supported Playgroups

LIBRARIES



- Alexandra, Yea and Kinglake Library
- Mobile Library

SPORT AND RECREATION



- Sporting Facilities
- Parks
- Playgrounds
- Swimming Pools
- Sport and Recreation Development

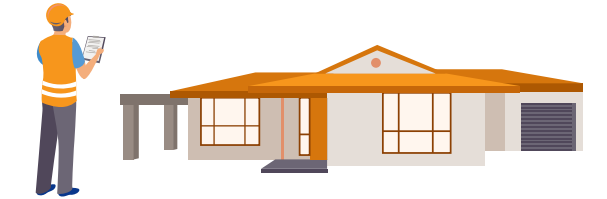
COUNCIL SERVICES FOR OUR COMMUNITY

ECONOMIC DEVELOPMENT AND TOURISM



- Business and Economic Development
- Events Support
- Tourism Marketing
- Strategic Land Use Planning

BUILDING, PLANNING AND DEVELOPMENT



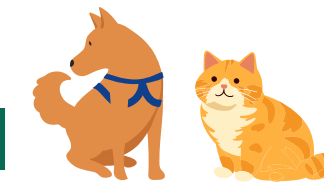
- Building Regulation
- Statutory Planning
- Business Regulation
- Subdivisions
- Business Compliance
- Food Safety
- Wastewater Management

ENVIRONMENT AND WASTE



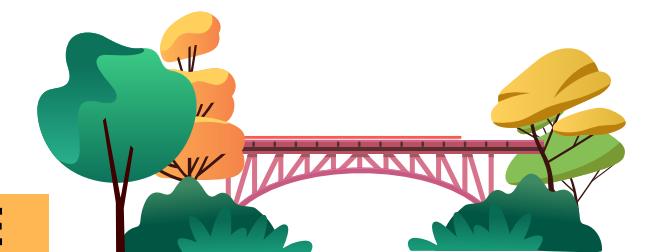
- Public Litter Bins
- Waste Education
- Resource Recovery Centres
- Landfill
- Residential and Commercial Waste and Recycling Collection
- Biodiversity and Natural Resource Management
- Climate Change Mitigation
- Bushland Reserves
- Trees and Arboriculture
- Environmental Health
- Scrap Shacks

MY PETS AND ANIMALS



- Pet Registration
- Wandering Pets and Livestock

ROADS AND INFRASTRUCTURE



- Road Network
- Street Landscaping and Lighting
- Parking
- Bridges
- Footpaths and Trails
- Asset and Facilities Management
- Asset Design and Construction
- Asset Maintenance
- Fleet and Plant Management