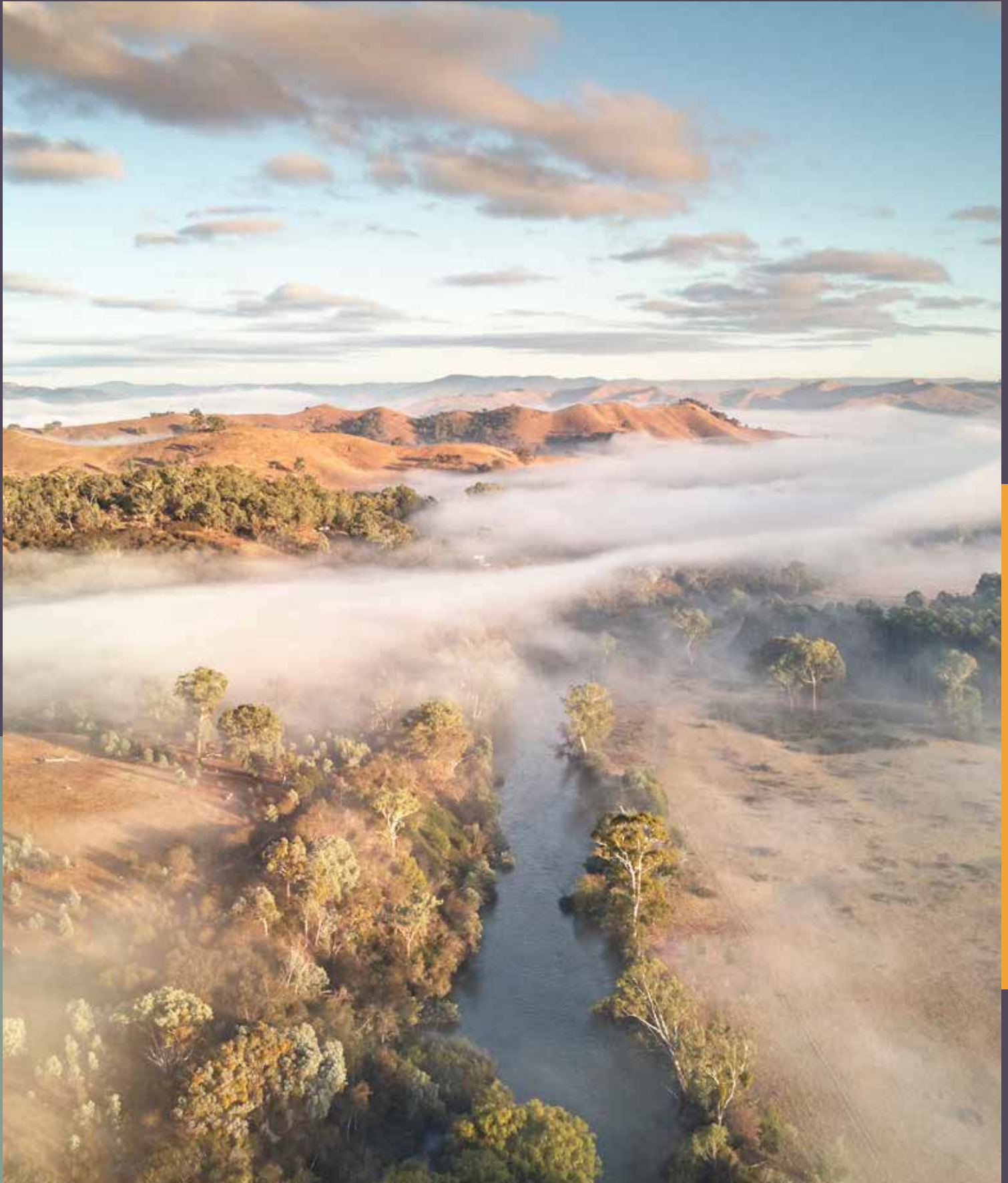


MURRINDINDI SHIRE NEW RESIDENT KIT



Murrindindi
Shire Council

JANUARY 2024!





CONTENTS

Welcome to our beautiful Murrindindi Shire	1
About this kit	2
Your Council	3
Communicating with Council	3
Access and Inclusion	3
Traditional Owners	4
Councillors	4
Council Meetings	5
Council Plan 'Shaping Our Future'	5
Aged and Disability Care Services	7
Services Australia (Centrelink)	9
Children's Services	9
Youth Services	11
Libraries	12
Grants and Sponsorships	13
Roads and Bridges	13
Your Property	14
Garbage, Recycling and Waste Management	14
Murrindindi Shire Map	15
Animals	18
Building, Planning and Development	19
Economic and Business Development	19
Environmental Management	20
Rates	20
Upper Goulburn Landcare Network (UGLN)	20
Trees	20
Fire Restrictions and Burning Off	21
Fire and Other Emergencies	21
Council's Fire Prevention Activities	22
Emergency Relief and Recovery	22
Emergency Aid	22
Our Community	23
Arts	23
Community Directory	23
Events, Markets and Festivals	24
Education	24
Venues for Hire	27
Heatwave Information	27
Medical Facilities	27
Public Transport and Accessibility	28
Visitor Information	28
Volunteering	28
Sport and Recreation	29
Emergency/Out of Hours Numbers	31
Contact Us	33



WELCOME TO OUR BEAUTIFUL MURRINDINDI SHIRE

Photo: Keppel Lookout

We have compiled this welcome pack for our new residents to provide you with a handy reference guide to our Shire and Council services. We hope this will help you settle in, learn more about our wonderful Shire and about the services available from Council and within the community.

Murrindindi Shire is located within close proximity to Melbourne, a short 60 - 90 minute drive from Melbourne, depending on your route. The Shire spans 3879 square kilometres and encompasses the charming rural townships of Alexandra, Eildon, Kinglake, Marysville and Yea. The Shire boasts great natural beauty and tourist attractions such as Lake Eildon, Kinglake National Park, Cathedral Range State Park, the Goulburn River and Lake Mountain. There are picturesque walking, bike and horse riding tracks and trails across the Shire, including the Great Victorian Rail Trail.

The majority of the Shire’s land is classified as agricultural. Agriculture (including forestry and fishing), construction, manufacturing and tourism, are our key industries.

Murrindindi Shire includes the following locations:

- | | | |
|----------------|--------------------|------------------|
| • Acheron | • Granton | • Murrindindi |
| • Alexandra | • Highlands | • Narbethong |
| • Buxton | • Homewood | • Pheasant Creek |
| • Cathkin | • Kanumbra | • Rubicon |
| • Castella | • Kerrisdale | • Strath Creek |
| • Caveat | • Killingworth | • Taggerty |
| • Devils River | • Kinglake | • Taylor Bay |
| • Dropmore | • Kinglake Central | • Terip Terip |
| • Eildon | • Kinglake West | • Thornton |
| • Fawcett | • Koriella | • Toolangi |
| • Flowerdale | • Limestone | • Whanregarwen |
| • Ghin Ghin | • Maintongoon | • Yarck |
| • Glenburn | • Marysville | • Yea |
| • Gobur | • Molesworth | |



ABOUT THIS KIT

Photo: Black Spur

The information in this kit is up to date based on the information we have available at the date of publication (January 2024). If you need to ensure the information you are seeking is still current, we suggest you check our website at murrindindi.vic.gov.au or give us a call on 5772 0333.

We’d also welcome any suggestions you may have to improve this kit. Please feel free to drop us an email at customer@murrindindi.vic.gov.au



**YOUR
COUNCIL**

COMMUNICATING WITH COUNCIL

Murrindindi Shire Council is keen to have open and active conversations with our communities. If you'd like to know more about our services, or would like to register a customer request or provide us with feedback, you have a number of options for getting in touch.

Our Customer Service Team is a great source of local knowledge - you can call us on 5772 0333 during normal business hours. We also have an after hours service for emergencies, which is accessed via the same number.

You can also visit our Library and Customer Service Centres in Alexandra, Kinglake and Yea or our Mobile Library and Customer Service which visits various locations across the Shire.

Our website is open for business 24/7 at murrindindi.vic.gov.au. You can lodge a customer request or provide us with feedback online via our website, or via the Snap Send Solve App.

You can also communicate with us via social media:



[@murrindindishirecouncil](https://www.facebook.com/murrindindishirecouncil)

[@discoverdindi](https://www.facebook.com/discoverdindi) [@murrindindilibraryservice](https://www.facebook.com/murrindindilibraryservice) [@murrindindichildrensnetwork](https://www.facebook.com/murrindindichildrensnetwork) [@murrindindiyouth](https://www.facebook.com/murrindindiyouth)



[@discoverdindi](https://www.instagram.com/discoverdindi)

[@murrindindishireyouth](https://www.instagram.com/murrindindishireyouth)

ACCESS AND INCLUSION

Council is committed to ensuring our services, programs and infrastructure are accessible to all people in our Shire, wherever possible.

We work in partnership with other service providers, Tourism and Traders associations and community groups to promote and improve access for all of our community members across the Shire. Council also convenes an Access and Inclusion Committee to work with our partners and prioritise our efforts.

TRADITIONAL OWNERS

Murrindindi Shire is country to both the Taungurung and Wurundjeri Woi-wurrung People. The vast majority of our Shire is located on Taungurung Country.

Council is working to strengthen our relationship with our traditional owners in ways which recognise and acknowledge the traditional custodians of the land, our rich diversity and our shared potential.

For more information about the Taungurung clans, Country or culture, go to taungurung.com.au

For more information about the Wurundjeri Woi-wurrung clans, Country or culture go to wurundjeri.com.au

COUNCILLORS

Murrindindi Shire is represented by seven Councillors elected from the Shire's seven wards (see map below to identify your ward). One Councillor is elected as Mayor annually by Council. The current Council was elected for a four year term in November 2020. More information and contact details for our Councillors are available at murrindindi.vic.gov.au/councillors

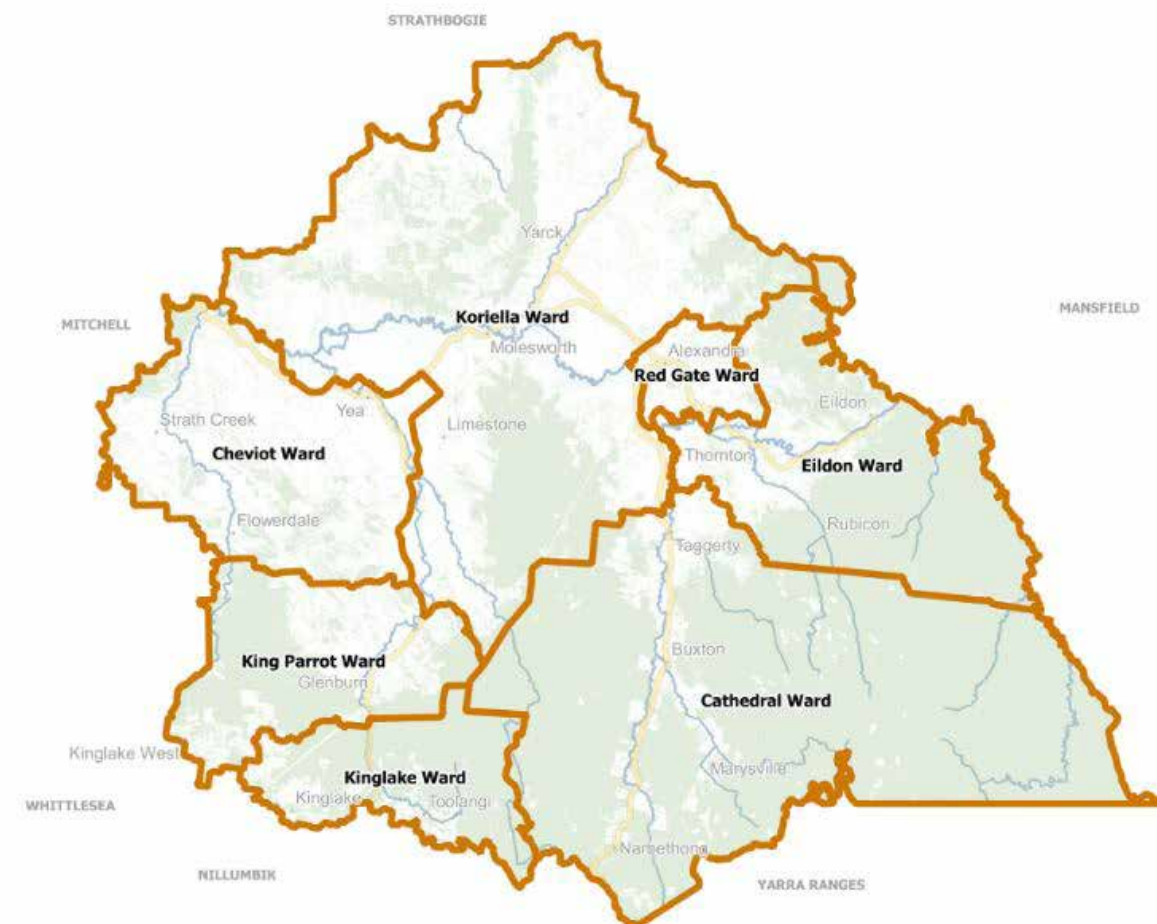




Photo: Yea Wetlands

COUNCIL MEETINGS

Council meetings are open to the public to attend and are a good way for the community to see how local decision-making takes place and to observe Council's democratic processes.

Scheduled meetings of Council are held monthly and alternate between the Yea and Alexandra Council Chambers to make it as easy as possible for people in different parts of the Shire to attend. If you haven't been to a Council meeting, we encourage you to come along to see what happens and find out more about what Council is doing in the Shire. You can also contribute your views at the 'Open Forum' session of the meeting.

At times, part of a meeting will be closed to the public to allow discussion of confidential matters in accordance with the Local Government Act 2020. Such matters might include consideration of personal hardship of a ratepayer/resident, industrial and contractual matters, proposed developments, legal advice, matters affecting the security of Council property or any other matter which Council considers could prejudice Council or members of the public.

For more information about Council meetings, including agendas and minutes of previous meetings, please visit Council's website at murrindindi.vic.gov.au/councilmeetings

You can also tune in to our Council meetings live on our Facebook page and on our website.

COUNCIL PLAN 'SHAPING OUR FUTURE'

At the beginning of the current Council's term, Council ran a 'Shaping Our Future' campaign designed to get community feedback and ideas to help inform the creation of Murrindindi Shire Council's Plan 2021-2025.

If you'd like to learn more about our Plan and Council's priorities for services and work across the Shire for 2021-2025, download a copy at murrindindi.vic.gov.au/councilplan, or contact Council.



Photo: Goulburn River



AGED AND DISABILITY CARE SERVICES

Aged and Disability services are delivered across Murrindindi Shire by not-for-profit providers Nexus Primary Health and Menzies Support Services. These services include personal care, domestic assistance, respite and planned activity groups.

Nexus Primary Health provides services in the western part of the Shire and Menzies Support Services provides services in the eastern part of the Shire.

Nexus Primary Health cover Castella, Caveat, Devils River, Dropmore, Flowerdale, Ghin Ghin, Glenburn, Highlands, Kerrisdale, Killingworth, Kinglake, Kinglake Central, Kinglake West, Limestone, Molesworth (West of the Goulburn River), Murrindindi, Pheasant Creek, Strath Creek, Toolangi and Yea. Nexus Primary Health also coordinate Home Maintenance services and Meals on Wheels services across Murrindindi Shire. Visit their website at nexusprimaryhealth.org.au

Menzies Support Services cover Acheron, Alexandra, Buxton, Cathkin, Elldon, Fawcett, Granton, Gobur, Homewood, Kanumbra, Koriella, Maintongoon, Marysville, Molesworth (East of the Goulburn River), Narbethong, Rubicon, Taggerty, Taylor Bay, Terip Terip, Thornton, Whanregarwen and Yarck. Visit their website at menziessupport.org.au

Residential and Aged Care is also available across the Shire so our older residents can stay within their established community and social groups.

Residential Aged Care facilities in Murrindindi Shire include:

- Darlingford Upper Goulburn Nursing Home at Eildon
- Kellock Lodge in Alexandra
- Rosebank Hostel and Nursing Home in Yea

General information for our community members who are over 55 can be found by calling us on 5772 0333 or visiting our website at murrindindi.vic.gov.au/over55

You can also find information about Aged Care Services at myagedcare.gov.au or by calling 1800 200 422.

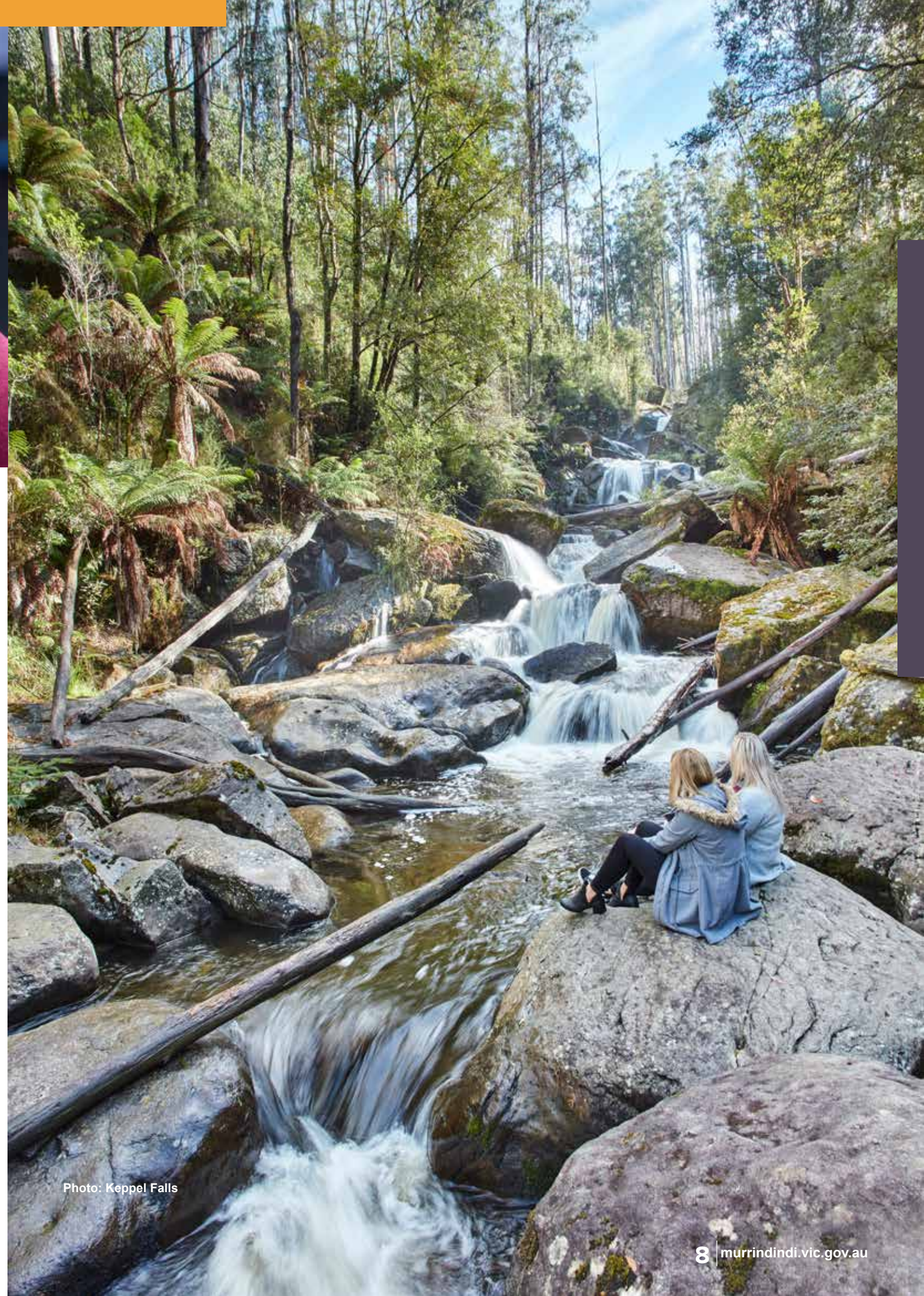


Photo: Keppel Falls

SERVICES AUSTRALIA (CENTRELINK)

Centrelink Access Points provide you with self-help facilities where you can conduct business relating to Services Australia reporting, benefits claims, child support etc.

Murrindindi Shire Council's Kinglake Library and Customer Service Centre is a Centrelink Access Point. We provide access to information products and forms, access to a telephone to call the Centrelink, Medicare claim forms, a fax/ photocopier and a computer to enable you to connect to online services – all at no charge to you. We can also sight and photocopy identity documents for Centrelink-related purposes.

For information on other Services Australia Agents and Centrelink Access Points go to the Services Australia website at servicesaustralia.gov.au/agents-and-access-points

CHILDREN'S SERVICES

We provide a range of services to support parents and children across the Shire, including Child Care and Maternal and Child Health. We also offer a range of library programs (see Libraries section for more details).

Childcare

Council provides Family Day Care across the Shire in the homes of registered educators. Family Day Care educators currently work in Alexandra, Kinglake, Kilmore, Broadford, Seymour, Woori Yallock, Healesville, Chum Creek, Seville and Millgrove.

Educators can care for up to seven children in total, but no more than four preschoolers at a time. Care can also be provided in an approved venue such as a school. For more information go to murrindindi.vic.gov.au/childcare

For families needing long day care, facilities providing this include:

Alexandra Baby Care 13 Coster Street Alexandra VIC 3714	alexandrababycare.com.au Phone 5772 2155
Marysville Pre School Centre 15 Falls Road Marysville VIC 3779	marysville.kin@kindergarten.vic.gov.au Phone 5963 3330
Kinglake Ranges Children's Centre 69 Extons Road Kinglake Central VIC 3757	kinglakerangescc@gmail.com Phone 5786 1352
Yea Uniting Early Learning 23 The Semi Circle Yea VIC 3717	murrindindi.vic.gov.au/yea-early-learning Phone 1800 183 103

Playgroups

Playgroups are a great way to help socialise your children before they go to school. Playgroups also provide you with the opportunity to meet other parents going through similar experiences, ease the isolation that often comes with caring for young children, and find out about local community, health and support services. Many of the playgroups in Murrindindi Shire are run by volunteer committees. Council also provides a facilitated playgroup session in Kinglake on Monday and Thursday mornings. For more information visit murrindindi.vic.gov.au/supportedplaygroups

For more information about the session locations and times or to find your nearest playgroup, go to murrindindi.vic.gov.au/communitydirectory. To find out more about the facilitated group sessions, contact Council on 5772 0333, and don't forget to get in touch with one of our great libraries around the Shire to find out about the range of programs they offer which cater for children of all ages.

PEEP - Parent Early Education Partnership

PEEP is a free fun and innovative early education program for parents and carers with children. Fully trained to work with you to build confidence, affirming you are your child's first and best teacher. Learn new ideas for playing and interacting with your child. Sing songs and share books and stories. Become more aware of your child's development and how you can help. Talk about issues that affect you and your child. Build relationships and share ideas with other parents and carers in a supportive, friendly environment. Help develop your child's self esteem and positive attitude towards learning.

Council run two sessions. Wednesday morning in Kinglake and Thursday afternoon in Alexandra. For more information contact Council on 5772 0333 or go to murrindindi.vic.gov.au/peep

Immunisation

Council provides a free childhood immunisation service. Our experienced nurses are available to discuss your child's immunisation program and give the required vaccines. Immunisation sessions are conducted in Alexandra, Kinglake and Yea. For more information go to murrindindi.vic.gov.au/immunisation

Maternal and Child Health Services

Our Maternal and Child Health service is a free and confidential service that provides professional advice on the health and development of your child from birth to 6 years. Information and advice is available on the following:

- women's health issues
- breast feeding
- infant feeding and sleeping
- hearing and vision screening
- childhood illness
- post natal depression
- home safety issues

New Parents Groups are held at Alexandra, Yea and Kinglake Maternal and Child Health Centres.

Services are provided by appointment at the following locations:

Alexandra Maternal and Child Health Centre	Perkins Street Alexandra VIC 3714
Flowerdale Maternal and Child Health Centre	Flowerdale Primary School and Early Learning Centre 6525 Yea-Whittlesea Road Flowerdale VIC 3717
Kinglake Maternal and Child Health Centre	Kinglake Ranges Children's Centre 37-69 Extons Road Kinglake VIC 3757
Marysville Maternal and Child Health Centre	Marysville Primary School and Early Learning Centre 15 Falls Road Marysville VIC 3779
Yea Maternal and Child Health Centre	Yea Children's Centre The Semi Circle Yea VIC 3717

For more information and operating hours go to murrindindi.vic.gov.au/maternalchildhealth or alternatively you can email us at mch@murrindindi.vic.gov.au or call 5772 0333.



Murrindindi Children's Network

Council also runs the Murrindindi Children's Network, which brings together agencies and others who provide care and services for children and families. Like us on Facebook @murrindindichildrensnetwork, where we provide links, tips and other information parents will find helpful. To find out more about the services we provide for children, please visit our website at murrindindi.vic.gov.au/childrensnetwork or call us on 5772 0333.

YOUTH SERVICES

Murrindindi Shire Council has a small team of youth workers who provide youth services to those aged 12 to 25 who live, work and play in Murrindindi Shire.

Our team provides and supports youth activities including leadership, life skills, community events, school events, performing arts projects, resilience and well-being programs.

Council also works closely with, and supports, local community groups, including:

- FReeZA Committee - a group of young people with an interest in music, entertainment, and event management, meet to plan and deliver FReeZA events. They also attend training that is relevant to their areas of interest.
- Guardians of the Earth – a group of young people passionate about the climate and sustainability. The Guardians of the Earth meet every three weeks during the school term at Alexandra Secondary College to discuss and action climate focussed objectives in the school and community.
- Various Community and Neighbourhood Houses – Council partners with Community and Neighbourhood Houses to deliver youth events and activities.

For more information and useful links go to murrindindi.vic.gov.au/youth and be sure to like and follow our social media pages for updates.

- Facebook - [Murrindindi Shire Youth](https://www.facebook.com/MurrindindiShireYouth)
- Instagram - [@MurrindindiShireYouth](https://www.instagram.com/MurrindindiShireYouth)

There are also a number of specialised services available to youth in Murrindindi Shire:

- Nexus Health - nexusprimaryhealth.org.au
- Family Care - familycare.net.au
- CRLLEN - centralrangesllen.org.au
- Berry Street Navigator Program - berrystreet.org.au/what-we-do/education-services/navigator-program

We also encourage our young people to access the Youth Services Directory at youthservicesdirectory.com.au



LIBRARIES

Our library branches are located in Alexandra, Kinglake and Yea. All of our library branches stock a wide range of books, CDs, DVDs, magazines and reference material available for members to access for free, along with printing and photocopying facilities, WiFi and PCs for public use. You can also access and reserve items from our catalogue, borrow eBooks and magazines online.

We run a great range of programs at each of our branches, including guest speakers and storytime sessions, ably supported by our wonderful 'Friends of the Library' groups, comprised entirely of volunteers (who are always looking for new members!).

We also have a Mobile Library and Customer Service van which travels to eight locations across the Shire, bringing books and more to our smaller communities. And you can now access the full range of Council services on the van too - you can do anything from paying Council bills by card (or cash up to \$50) through to enquiring about a planning matter or lodging a customer request.

To find out more go to murrindindi.vic.gov.au/libraries or give us a call on 5772 0333. You can also like our Murrindindi Library Service Facebook page [@murrindindilibraryservice](https://www.facebook.com/murrindindilibraryservice) to stay up to date with the latest news and events.

Alexandra Library 49 Grant Street Alexandra VIC 3714	Monday 9.00 am - 5.00 pm Tuesday 9.00 am - 6.30 pm Wednesday 9.00 am - 5.00 pm Thursday 9.00 am - 5.00 pm Friday 9.00 am - 5.00 pm Saturday 9.30 am - 12 noon
Kinglake Library 19 Whittlesea-Kinglake Road Kinglake VIC 3763	Monday 9.00 am - 6.30 pm Tuesday 9.00 am - 5.00 pm Wednesday 9.00 am - 5.00 pm Thursday 9.00 am - 5.00 pm Friday 9.00 am - 5.00 pm Saturday 10.00 am - 12 noon
Yea Library 15 The Semi Circle Yea VIC 3717	Monday 9.00 am - 5.00 pm Tuesday 9.00 am - 6.30 pm Wednesday 9.00 am - 5.00 pm Thursday 9.00 am - 5.00 pm Friday 9.00 am - 5.00 pm Saturday 10.00 am - 12 noon
Mobile Library & Customer Service on the road four days per week. To stay up to date and informed of any last minute changes to our schedule or service, like our Facebook page @murrindindilibraryservice. To download the latest timetable, go to murrindindi.vic.gov.au/mobile	Weekly services Buxton & Marysville - Tuesdays Eildon - alternating Wednesdays and Saturdays Fortnightly services Flowerdale, Glenburn, Toolangi and Strath Creek - Thursdays Highlands - Wednesdays

GRANTS AND SPONSORSHIPS

Council’s Grants and Sponsorships Program continues to build on our commitment to support events, activities, projects and individuals that align with Council’s objectives outlined in the Murrindindi Shire Council Plan 2021-2025.

It provides the opportunity for local groups and individuals to seek funding to support a range of activities and initiatives which contribute to broader community wellbeing, visitation and economic development.

There are six grant streams available - Quick Response, Sponsorships, Community Projects, Local Events, Events of Major Significance and Special Purpose.

If you are interested in applying you can find more information, including eligibility criteria on our website at murrindindi.vic.gov.au/grants

ROADS AND BRIDGES

Council and VicRoads maintain a large network of roads throughout the Shire.

Council maintains approximately 1100km of roads across the Shire. This includes 500km of sealed roads and 600km of unsealed roads. If you would like to report any maintenance issues, you can contact Council. Council’s Register of Public Roads lists the roads and footpaths maintained by Council. It also provides response times for repairs and standards to which roads are to be maintained.

Requests for maintenance on roads which are the responsibility of VicRoads should be directed to VicRoads. VicRoads is responsible for maintenance of the following roads and highways:

- Acheron Way
- Broadford/Flowerdale Road
- Buxton/Marysville Road
- Healesville/Kinglake Road
- Heidelberg/Kinglake Road
- Marysville Road
- Marysville/Woods Point Road
- Taggerty/Thornton Road
- Whittlesea/Kinglake Road
- Whittlesea/Yea Road
- Goulburn Valley Highway
- Maroondah Highway
- Melba Highway

VicRoads can be contacted on 13 11 70 (24 hours, 7 days a week) or via their website vicroads.vic.gov.au/contact-us

Works and vegetation on road reserves

To conduct works within a road reserve such as constructing a vehicle crossing, connecting Authority services or connecting to a Council drain, you must first apply to Council. Planting or removing vegetation on road reserves is also subject to Council approval. Call us on 5772 0333.

VicRoads Services

Council’s Alexandra Customer Service Centre provides a range of VicRoads services to the community.

We can help you if you need to organise:

- the supply of vehicle and vessel registration transfer forms
- license renewals for vehicle, boat, security and firearms
- learner permit testing
- replacement of work diaries (previously known as log books)
- collection of surrendered number plates.

For any other VicRoads enquiries please visit vicroads.vic.gov.au or phone 13 11 71.



Photo: Frank Thompson Reserve

GARBAGE, RECYCLING AND WASTE MANAGEMENT

Council provides waste management, resource recovery services and related infrastructure as well as kerbside collection to the community.

To help our community dispose of household and business waste and recyclable materials appropriately, Murrindindi Shire Council operates the following five Resource Recovery Centres and a Landfill facility in Alexandra:

Alexandra 119 Mt Pleasant Road Alexandra VIC 3714	Monday & Friday Wednesday Saturday & Sunday	10.00 am - 12 noon 1.00 - 4.00 pm 10.00 am - 4.00 pm
Eildon 100 Jerusalem Creek Road Eildon VIC 3713	Tuesday Thursday Saturday Sunday	10.00 am - 1.00 pm 12 noon - 3.00 pm 9.00 am - 4.00 pm 10.00 am - 4.00 pm
Kinglake 205 Watson’s Road Kinglake West VIC 3757	Wednesday Saturday Sunday	10.00 am - 4.00 pm 9.00 am - 4.00 pm 10.00 am - 4.00pm
Marysville 2 Sands Mill Court Marysville VIC 3779	Monday & Friday Wednesday Saturday Sunday	1.00 - 3.00 pm 10.00 am - 12 noon 9.00 am - 4.00 pm 10.00 am - 4.00 pm
Yea 617 Ghin Ghin Road Yea VIC 3717	Tuesday Saturday Sunday	10.00 am - 4.00 pm 9.00 am - 4.00 pm 9.00 am - 3.00 pm

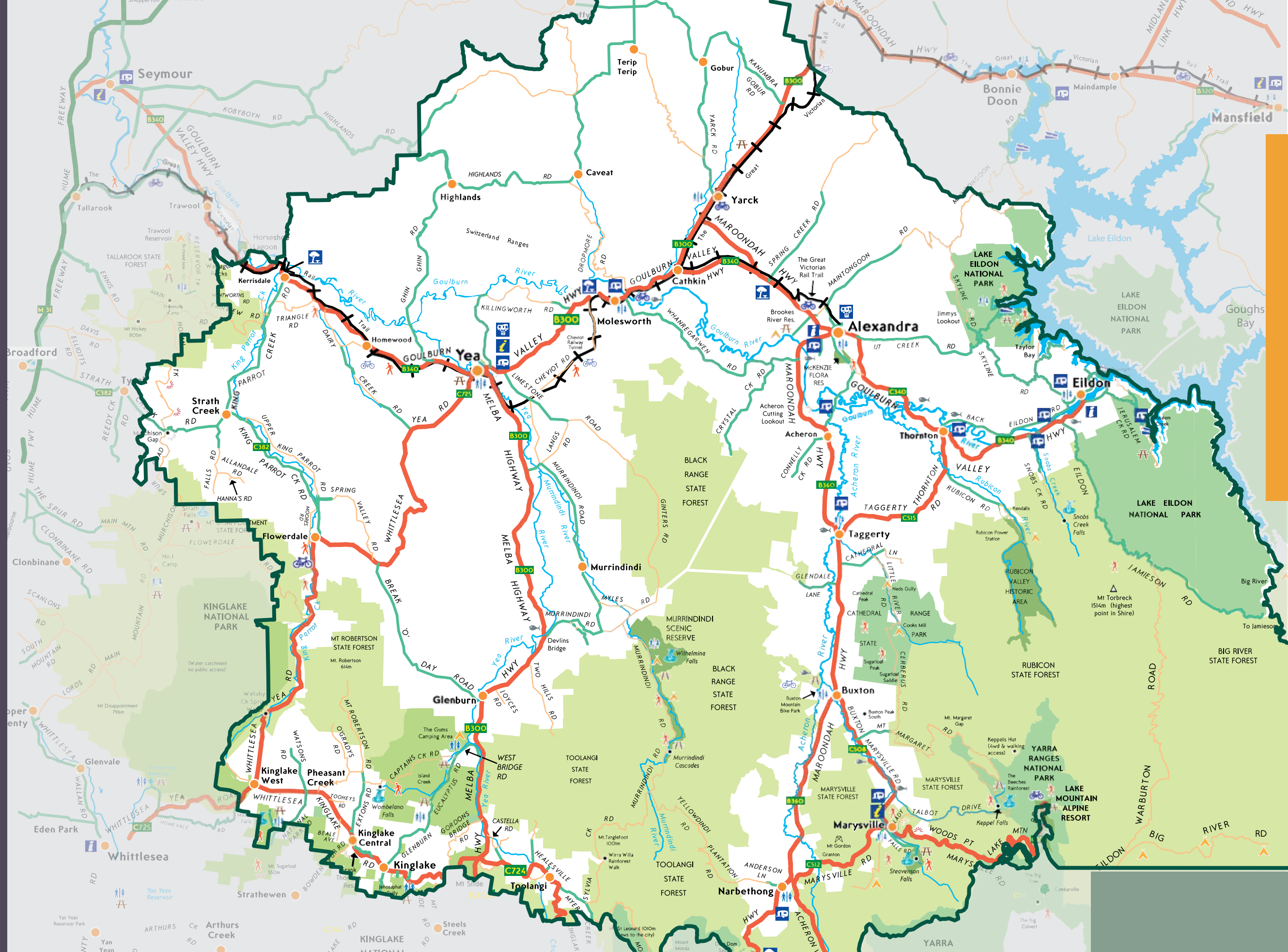
MURRINDINDI SHIRE MAP

Legend

- Hwy rest areas
- Caravan park
- Dump point
- Walking Track
- Visitor Information
- Public toilet
- Picnic area
- Waterfall
- Fishing spot
- Camping
- Lookout
- Boat launching
- Cycling
- Major Rd
- Sealed Rd
- Unsealed Rd
- Rail Trail
- National Park
- State Forest
- Other Parks
- Lake or large river

0 1 2.5 5

N



Murrindindi
Shire Council

GARBAGE, RECYCLING AND WASTE MANAGEMENT

At our Resource Recovery Centres (RRC), Council recycles:

- paper
- cardboard
- cans
- tins
- recyclable household plastics numbered 1 to 7
- garden waste
- tyres
- couches
- mattresses
- metals and items substantially comprising of metal, excluding e-waste
- light bulbs including fluorescent tubes
- lead acid batteries and DrumMuster containers

For more information about what can be accepted at the RRC, please go to murrindindi.vic.gov.au/wastefacilities

We are also working to minimise waste and encourage reuse and recovery. Our Re-Use Program encourages Shire residents to take, re-purpose and re-use materials from RRCs across the Shire free of charge.

Scrap Shacks

Council has two re-use shops located at the Alexandra Resource Recovery Centre and the Yea Resource Recovery Centre. The re-use shops, known as ‘Scrap Shacks’ provide a wonderful opportunity for residents to not only find treasures, but also start thinking about using consumables more sustainably. Operating hours for the Scap Schacks are the same as the Resource Recovery Centres.

E-waste

E-waste is anything with a plug or battery that has reached the end of its useful life - think phones, computers, audio devices, hair dryers, TVs, air-conditioners, refrigerators and other white goods. You can dispose of your e-waste by taking it to our Alexandra, Kinglake or Yea Resource Recovery Centres, or by using one of the e-waste services listed by Sustainability Victoria. It is free to drop most e-waste items. For more information visit murrindindi.vic.gov.au/e-waste

Kerbside Collection

Households within township areas of the Shire receive a garbage (120 litre bin) and recycling (240 litre bin) collection service. Garbage is collected weekly and recycling waste is collected fortnightly. For households outside of townships, a service may be available if the property is on, or near, a collection route.

To find out when your bins will be collected, if you are eligible to receive a kerbside collection, or how to go about getting a bin please check our website at murrindindi.vic.gov.au/kerbsidecollection or call Council on 5772 0333.

Council’s website also includes handy information about how you can minimise your footprint on the environment by consciously making decisions about how you dispose of waste, and tips to reduce the quantity of waste you generate. Please go to murrindindi.vic.gov.au/footprint or contact Council for more information.

Green Waste disposal

Green waste can be disposed at each of our five Resource Recovery Centres. This includes domestic quantities of grass clippings, leaves, garden trimmings, branches and tree trunks. Usually, free green waste disposal is only available during October and November, in preparation for the CFA declared Fire Danger Period and in April each year, or after a declared emergency or major storm event.

Outside of these times a fee of \$20 per cubic metre will apply. For more information on green waste disposal visit murrindindi.vic.gov.au/greenwaste

ANIMALS

Registration

Registering your domestic pets is not only a legal requirement for every cat and dog, it is also important in ensuring they can be easily identified and returned to you if they escape, or are lost or injured.

All dogs and cats being registered for the first time with Murrindindi Shire Council need to be micro-chipped (as do registered dogs and cats that are relocated to Murrindindi Shire from another Shire).

All cats and dogs in the Shire must wear their Council-issued identification tag at all times so you can be contacted and your pet returned to you in the event they are found outside your property.

Registration renewals are due in April each year.

Residents have a wide range of responsibilities in managing their animals. For more information, including how to register your pets, go to murrindindi.vic.gov.au/animals or contact us on 5772 0333.

Pet Exchange Register

You can now find out where your next pet comes from thanks to the Victorian Government’s online database, the ‘Pet Exchange Register’. If you plan to advertise, sell or give away a dog or cat, you need to be enrolled on the Register. If you are thinking about getting a new pet, please check the Register first to ensure your new pet comes from a valid seller or home. For more information go to murrindindi.vic.gov.au/petregister

Wandering Pets and Livestock

Stock on roads is a hazard and can cause car accidents. To ensure the safety of our communities and visitors, our Community Safety officers impound any animals, including livestock, found wandering in the Shire.

Landowners with livestock are responsible for providing adequate fencing to secure their property. Large fines can be imposed if animals are not properly secured.

- If not claimed within 8 days, dogs, cats and other small animals will be sent to Animal Aid in Coldstream for rehousing.
- Trespassing livestock will be sold at market after being impounded and unclaimed for 7 days.
- If found abandoned, stock will be kept for 14 days, before being sold at market if an owner cannot be located.

Dogs which are not confined to their properties can maim and kill livestock. These incidents are both deeply upsetting and very costly for stock owners. Dogs must be confined to their own properties at all times. Failure to do this can result in large fines.

If you have lost or found an animal or have encountered wandering stock, please contact Council’s Community Safety officers immediately on 5772 0333.

For information on responsible animal management on farms you can go to agriculture.vic.gov.au/livestock-and-animals/livestock-health-and-welfare

Saleyards and Livestock

For information on obtaining permits to enable stock to graze on road reserves or information about the Yea Saleyards and cattle sale dates for this year, go to the Council website murrindindi.vic.gov.au/saleyards, or contact Council on 5772 0333.

Snakes and Wildlife

Living in rural areas has many advantages, but also brings us into more direct contact with wildlife. Please take care on our roads, particularly at night and around dusk and dawn when animals are out and about.

If you need help with snakes or other wildlife please contact the Department of Energy, Environment and Climate Action on 136 186, or visit wildlife.vic.gov.au

Help for injured animals or other situations involving wildlife is available from the following organisations:

Wildlife Victoria - 1300 094 535

Help for Wildlife - 0417 380 687

Wildlife Rescue Australia - 1300 596 457

Wasps, Bees and Locusts

Information on what to do regarding European wasps, bees, locusts and fruit fly can be found on Council's website murrindindi.vic.gov.au/wasps or by calling us on 5772 0333.

BUILDING, PLANNING AND DEVELOPMENT

Council provides a range of support services and information about planning and development, building and construction. Whether you're looking for information on building works and permits, fencing or dwelling and property information, our team can help.

We encourage you to contact our Planning Unit and talk to a Planning Officer before you buy land or start making any plans to build or develop land. Our experienced staff can help you work through your planning and building questions.

While you are welcome to drop in to our Alexandra Office to talk to a planner or building specialist, we encourage you to phone ahead and book an appointment to avoid disappointment. We can also arrange appointments at our Kinglake and Yea offices with advance notice. Please contact Council on 5772 0333 or get in touch by sending an email to customer@murrindindi.vic.gov.au

There is also information which can help on our website at murrindindi.vic.gov.au/planningandbuilding

ECONOMIC AND BUSINESS DEVELOPMENT

One of the strengths of our Shire is the variety of its businesses and industry sectors. The majority of the Shire's land is classified as agricultural. The local agricultural industry includes the expanding horticulture and aquaculture sectors, as well as plantation forestry and fishing. High quality berries and stone fruit are grown and packaged locally as a result of easy access to markets, high quality soil, clean water supply and the perfect climate. 80% of Australia's farmed trout is grown and prepared for market in Murrindindi Shire.

Other key economic drivers are tourism, construction specialists and manufacturing, with world-leading technology being applied to the rapidly-growing houseboat manufacturing sector based at Lake Eildon. We also have a well-established education, health and community services sectors.

Council is committed to helping build prosperous and sustainable communities. The growth and success of local businesses are crucial to the Shire's future. We want to help local businesses achieve their full potential.

Murrindindi Shire is an optimal investment location, with close proximity to key markets, easy access to major transport routes and affordably-priced and available industrial and commercial land.

We support new and expanding businesses through our business concierge service. We can assist you to get started or relocate your business to Murrindindi Shire. See below for more information, or get in contact with the Team on 5772 0333 or email businesssupport@murrindindi.vic.gov.au

- Subscribe to the Business & Tourism eNewsletter: murrindindi.vic.gov.au/business-tourism-news
- murrindindi.vic.gov.au/yourbusiness
- murrindindiinvestment.vic.gov.au

ENVIRONMENTAL MANAGEMENT

Residents and visitors to our Shire love our beautiful environment.

We recognise the importance of maintaining our pristine surrounds and we also know that a sustainable future depends on understanding how we can reduce our human impacts and help our environment become more resilient to change. To this end, Council is working together with agencies and service providers to support and deliver good environmental results for our Shire.

Council has useful information about sustainability, native plants and animals, management of our roadside and reserves, vegetation, revegetation and weed control. You can find this information at murrindindi.vic.gov.au/environment

RATES

All property owners must pay rates so that Council has income to pay for services, maintenance and capital works. It enables us to provide you with services such as libraries, recreational facilities, community buildings, waste services and road maintenance.

Rate Notices are sent out in August every year. You can choose to pay your rates in full as long as you pay them by 15 February every year. You can also pay them by four separate instalments, due on 30 September, 30 November, 28 February (29 February in a leap year) and 31 May. Payment can be made online, via direct debit or at any one of our offices.

If you are having difficulty paying your rates, please contact Council's Rates Unit as soon as possible to discuss your options.

If you are a concession card holder, you can contact us to determine whether you are entitled to a rebate on your Council rates.

There is further information about rates and property valuations on our website at murrindindi.vic.gov.au/rates

UPPER GOULBURN LANDCARE NETWORK (UGLN)

UGLN has been operating for over ten years in Murrindindi Shire and now has 17 groups located across the Shire. UGLN has a strong and positive relationship with Council, landholders, community organisations, schools and government agencies. While helping to educate its members about the environment, UGLN also has a strong social angle and is a great way to meet people if you have recently moved to the Shire.

UGLN is located at Shop 5/10 High Street, Yea Victoria 3717. For further information about which UGLN group operates in your area, please contact UGLN at uglandcare@ugln.net or on 5797 4405.

You can also access more information at these two websites:

- landcarevic.org.au
- ugln.net

TREES

Council manages trees in urban areas and parks in the Shire. If you need to report a fallen tree, or have concerns about the safety of a tree, please contact Council on 5772 0333.

Native vegetation is protected under State legislation. If you wish to remove native vegetation on your property (including lopping, trimming or pruning of standing trees), you may need to apply for a permit through Council. There are some exemptions and a call to Council's Planning Unit can determine if an exemption applies to you.

FIRE RESTRICTIONS AND BURNING OFF

Fire restrictions apply across Murrindindi Shire on a seasonal basis and are designed to keep our communities safe. For current information, please go to Council's website at murrindindi.vic.gov.au/fire or call 5772 0333.

For information about the summer Fire Danger Period, visit the CFA website at cfa.vic.gov.au/warnings-restrictions/north-central-fire-district

Residents and ratepayers are allowed to burn off at specified times of the year and under certain conditions. For up to date conditions and times, visit murrindindi.vic.gov.au/burningoff

FIRE AND OTHER EMERGENCIES

For a comprehensive and up to date source of information about fire and other emergencies, please visit our website: murrindindi.vic.gov.au/fire

It is important to be aware that Murrindindi Shire is considered to be at high bushfire risk.

Murrindindi Shire is the North Central Fire District. You can find out what the predicted fire weather will be like over the next four days, including the predicted Fire Danger Rating on the CFA website at cfa.vic.gov.au/warnings-restrictions/north-central-fire-district

It is extremely difficult for fire agencies to stop any fire that starts when the Fire Danger Rating is High, Extreme or Catastrophic. In these conditions, fires can get out of control very quickly. You cannot rely on fire services turning up to your house or work to alert or protect you. So you need to carefully plan what you and your family will do in case of a fire on a High, Extreme or Catastrophic day.

There are five easy steps to prepare your household for bushfire

1. Know your risk: cfa.vic.gov.au/plan-prepare/am-i-at-risk
2. Everyone who lives in Murrindindi Shire should have a Bushfire Plan. Create your own Bushfire Plan using the CFA's advice: cfa.vic.gov.au/plan-prepare/your-bushfire-plan
3. Create your own Fire Ready Kit: cfa.vic.gov.au/plan-prepare/fire-ready-kit
4. Have a backup plan: cfa.vic.gov.au/plan-prepare/back-up-plans
5. Plan for your pets: cfa.vic.gov.au/plan-prepare/pets-and-bushfires

You can stay informed by downloading and monitoring the VicEmergency website and app at emergency.vic.gov.au

You can also listen to approved radio stations. UGFM Community Radio and ABC radio are the official emergency broadcasters in Murrindindi Shire (refer to page 31 for frequencies). We encourage all residents to have a radio available in case internet or telecommunications are impacted during an emergency, and to tune in for the latest advice.

You should also know where your local 'Bushfire Places of Last Resort:' are located. These are places you can go that offer limited fire protection in the case your own fire plan fails. You should go to these places only if all other options have failed. You should be aware that there are no services at these locations and your safety is not guaranteed. They are normally open spaces where you can be subjected to heat, smoke, ember attack and radiant heat from fire. A list of Places of Last Resort is available at Council's website at murrindindi.vic.gov.au/placesoflastresort

During the highest level of Fire Danger Rating – "Catastrophic" - Council limits its services and operating hours. You can find out about the changes via Council's website at murrindindi.vic.gov.au/catastrophicratingoperations

For further information, contact Council's Municipal Fire Prevention Officer or Emergency Management Coordinator on 5772 0333.

Preparing your Property for Fire

Every landowner has a responsibility to ensure they take necessary steps in reducing the risk of bushfire on their property and to reduce the risk of injury or damage to other persons or property.

Visit the CFA: Preparing Your Property website cfa.vic.gov.au/plan-prepare/how-to-prepare-your-property or our website murrindindi.vic.gov.au/prepareyourproperty for more information.

COUNCIL'S FIRE PREVENTION ACTIVITIES

Roadside Slashing Program

As part of Council's fire prevention program, we reduce fuel on approximately 500 km of local roads and roadsides.

Our Roadside Slashing Program is aimed at improving safety for road users and protecting property and public infrastructure.

For more information about the Program visit murrindindi.vic.gov.au/roadsideslashing

Inspecting Properties for Fire Hazards

When local conditions begin to dry out, Council's Municipal Fire Prevention Officers inspect properties across Murrindindi Shire for fire hazards.

A Fire Prevention Notice is issued if a fire hazard is identified on your property. The Notice will detail works that are required to reduce fire intensity and minimise ember or direct flame impact on your property or your neighbour's property. After the due date on the Notice has expired, the property is re-inspected to ensure works are completed.

Non-compliance with a Fire Prevention Notice most often results in Council arranging for the works to be done, with costs recovered and an infringement notice issued to the property owner.

If you need advice about managing your land to reduce fuel loads, call Council on 5772 0333 or visit our website murrindindi.vic.gov.au/fireinspections

EMERGENCY RELIEF AND RECOVERY

Council is responsible for the coordination of relief and recovery services during and after an emergency.

During a large-scale emergency, Council will coordinate access to relief services such as food, water, shelter, clothing and sleeping arrangements at a designated Emergency Relief Centre if required. The location of these relief centres will be advertised widely during an emergency.

After an emergency and depending on community need, Council will open a Recovery Centre that can help get affected members of the community back on their feet. Services available at a Recovery Centre range from access to Centrelink and Department of Health and Human Services through to access to emergency grants and providers of short to medium term accommodation.

Further information on relief and recovery is available on Council's website at murrindindi.vic.gov.au/emergencymanagement

Emergency Contacts

Please see the back page for emergency contact details.

EMERGENCY AID

Council does not provide emergency assistance for our residents, but emergency relief services are available through the Salvation Army, you can visit their website here salvationarmy.org.au

These can be accessed through the following services locally:

- Yea Community House - 5797 3070
- Alexandra District Health - 5772 0900



OUR COMMUNITY

ARTS

Murrindindi Shire has a diverse range of photography, arts and crafts, cultural, music and literary groups open to all levels of skills, knowledge and capability.

Our libraries, a number of Community Houses and service clubs also support the arts (including annual Arts Shows held throughout the Shire).

You can check the Community Directory on our website to find out what’s available near you or contact Council on 5772 0333.

COMMUNITY DIRECTORY

The Community Directory provides both new and long-term residents with an opportunity to find community and sporting groups in their own areas.

If you are looking to join a sport or recreation club, a cultural, historical or gardening group, or your are looking for a charity or volunteer organisation, this is where you can find a group close to you.

Our Customer Service team at Council can often help or refer you to the right group if you can’t find what you are looking for online. And if you want to start up a group of your own, don’t forget to register it on our Community Directory for free.

You can find the Community Directory on our website at murrindindi.vic.gov.au/communitydirectory



EVENTS, MARKETS AND FESTIVALS

Our residents and visitors to our Shire enjoy a wide and varied array of events and festivals.

Whether you love your local produce and craft markets, or prefer art shows, agricultural shows, food and wine tasting, music, car or truck shows or local picnic races, you can find them all on our Calendar of Events at murrindindi.vic.gov.au/events

Council Offices and Visitor Information Centres across the Shire stock event brochures and provide great advice on local events and also offer information on our local and regional attractions. Contact details for Council Offices and Visitor Information Centres are provided in this kit.

You can also stay up to date on what is happening by ‘Liking’ and following Council’s Facebook page or signing up for our ‘Discover Dindi’ e-newsletter here: murrindindi.vic.gov.au/discoverdindinews

EDUCATION

Kindergartens and pre-schools

Alexandra & District Kindergarten 15 Bayley Street Alexandra VIC 3714	alexandrakindergarten.com.au Phone 5772 1387
Eildon Kindergarten 10 Eighth Street Eildon VIC 3713	kindergarten@eildonps.vic.edu.au Phone 5774 2041
Flowerdale Kindergarten 3377 Whittlesea-Yea Road Flowerdale VIC 3717	kindergarten@flowerdaleps.vic.edu.au Phone 5780 2816
Kinglake Ranges Children’s Centre 37 Extons Road Kinglake Central VIC 3757	kinglakerangescc@gmail.com Phone 5786 1352
Marysville Pre School Centre 15 Falls Road Marysville VIC 3779	marysville.kin@kindergarten.vic.gov.au Phone 5963 3330
Yea Uniting Early Learning 23 The Semi Circle Yea Vic 3717	murrindindi.vic.gov.au/yea-early-learning Phone 1800 183 103



Primary Schools

Alexandra and surrounds: Alexandra Primary School 15 Webster Street Alexandra VIC 3714 St Mary's Primary School 10 Myrtle Street Alexandra VIC 3714	alexandraprimaryschool.com Phone 5772 1006 smalexandra.catholic.edu.au Phone 5772 1500
Eildon and surrounds: Eildon Primary School 45 High Street Eildon VIC 3713	eildonps.vic.edu.au Phone 5774 2074
Kinglake Ranges and surrounds: Flowerdale Primary School 3379 Whittlesea-Yea Road Flowerdale VIC 3717 Kinglake Primary School 20 McMahons Road Kinglake VIC 3763 Kinglake West Primary School 1045 Whittlesea-Kinglake Road Kinglake West VIC 3757 Middle Kinglake Primary School RSD1 Extons Road Kinglake VIC 3763 Toolangi Primary School 1756 Healesville-Kinglake Road Toolangi VIC 3777	flowerdaleps.vic.edu.au Phone 5780 1264 kinglakeps.vic.edu.au Phone 5786 1284 kinglakewestps.vic.edu.au Phone 5786 5262 mkps.vic.edu.au Phone 5786 1295 toolangips.vic.edu.au Phone 5962 9255

Marysville Triangle: Buxton Primary School 2208 Maroondah Highway Buxton VIC 3711 Marysville Primary School 15 Falls Road Marysville VIC 3779	buxtonps.vic.edu.au Phone 5774 7341 www.marysville.vic.edu.au Phone 5963 3256
Yea and surrounds: Sacred Heart School Yea 5 The Parade Yea VIC 3717 Yea Primary School 23 Station Street Yea VIC 3717	shyea.catholic.edu.au Phone 5797 2723 yeaps.vic.edu.au Phone 5797 2724

High Schools and Secondary Colleges

Alexandra Secondary College 86A Downey Street Alexandra VIC 3714	asc.vic.edu.au Phone 5770 2000
Yea High School 67 Racecourse Road Yea VIC 3717	yeahs.vic.edu.au Phone 5797 2207

Adult Education and Community Neighbourhood houses

Alexandra Community Hub 38A Downey Street Alexandra VIC 3714	alexhub.com.au Phone 5772 1238
Flowerdale Community House 36-42 Silver Creek Road Flowerdale VIC 3717	fchcoordinator@fchadmin.com.au Phone 5780 2664
Kinglake Ranges Neighbourhood House 6 McMahons Road Kinglake VIC 3763	kinglakeranges.com.au Phone 5786 1301
Toolangi Castella District Community House 1715 Healesville – Kinglake Road Toolangi VIC 3777	toolangi.net Phone 5962 9060
Yea Community House 15 The Semi Circle Yea VIC 3717	yeahouse.org.au Phone 5797 3070

Outdoor Education

There are a number of outdoor education providers in Murrindindi Shire. These facilities primarily service the education and corporate sectors.

VENUES FOR HIRE

The Shire has a great range of facilities available for hire, including our town halls.

These facilities play host to a variety of functions – from weddings, awards nights and gala dinners to sporting events, art and craft exhibitions, theatre groups and even regular musical group practice sessions.

For more information about our facilities and how you can find the right place and book it for your next event, please visit murrindindi.vic.gov.au/facilitiesforhire or contact Council on 5772 0333.

HEATWAVE INFORMATION

More people die every year from heatwaves than from bushfires. For information on how to deal with heatwaves, particularly for seniors and those who are most vulnerable, visit murrindindi.vic.gov.au/heat

MEDICAL FACILITIES

Murrindindi Shire has a range of medical facilities available to our residents and visitors ranging from local doctors and medical centres to hospitals. For any medical emergency, please call 000.

Alexandra District Health 12 Cooper Street Alexandra VIC 3714	adh.org.au Phone 5772 0900 Fax 5772 1904
Alexandra Medical Centre 54 Downey Street Alexandra VIC 3714	alexmedcentre.com Phone 5772 1444
Alexandra Family Medical Centre 114 Grant Street Alexandra VIC 3714	alexandramedical.com.au Phone 5724 3104 Fax 5724 3105
Marysville Medical Clinic 31 Falls Road Marysville VIC 3779	Phone 5963 3637 Fax 5963 4055
Nexus Primary Health - Kinglake Ranges Health Centre 19 Whittlesea-Kinglake Road Kinglake VIC 3763	nexusprimaryhealth.org.au (online appointments) Phone 1300 773 352 Fax 5734 8419
Yea and District Memorial Hospital 45 Station Street Yea VIC 3717	yeahospital.org.au Phone 5736 0400 Fax 5797 2391
Yea Community Health The Grace Bennetts Centre 45 Station Street Yea VIC 3717	Phone 5736 0410 Fax 5797 2391
Yea Medical Centre 20 Miller Street Yea VIC 3717	Phone 5736 0444 Fax 5797 2904

PUBLIC TRANSPORT AND ACCESSIBILITY

Information about public transport from Alexandra to Marysville and Eildon, and to Melbourne can be found on our website.

Council has buses available for hire by community groups or individuals with a disability.

Council also partners with Community Accessability Inc. to deliver a community transport program called ‘Moving Murrindindi’. The program connects volunteer drivers and vehicles with members of the community who need transport to get to medical or therapeutic appointments and major transport hubs.

For more information go to murrindindi.vic.gov.au/transport or call Council on 5772 0333.

VISITOR INFORMATION

Murrindindi Shire offers a wide range of visitor experiences including nature based activities, food and wine, adventure, touring, culture and heritage, festivals and events. For information on the many great things to see and do in our Shire visit discoverdindi.com.au or follow us on Facebook or Instagram @discoverdindi.

Visitor Information Centres are a great source of information about events, attractions, activities, accommodation, cafes, restaurants and ways to access the various natural amenities in our Shire. They are located at:

Alexandra Rotary Park 36 Grant Street Alexandra VIC 3714	info@alexandratourism.com alexandratourism.com Phone 5772 1100
Eildon (limited opening hours) Cnr Utah Place South & Main Street Eildon VIC 3713	lakeeildon.com
Marysville MiRa Marysville 11 Murchison Street Marysville VIC 3779	info@miramarysville.com.au marysvilletourism.com Phone 5963 4567
Yea Yea Wetlands Discovery Centre 2 Hood Street Yea VIC 3717	info@yeawetlands.com.au yeawetlands.com.au Phone 5797 2663

For the most up to date information about our information centres please visit discoverdindi.com.au/visit

VOLUNTEERING

Murrindindi Shire has one of the highest rates of volunteering in Victoria. We celebrate and encourage our volunteers who contribute time, effort and care to making the Shire an even better place to live.

There are many volunteering opportunities available for all ages and to match many different skills and interests. Volunteers help us (and many other organisations) to deliver a range of services across the Shire, including:

- Libraries
- School crossings
- Community groups, events and festivals
- Landcare
- Facility (halls and reserves) management

Visit our website to find out more about volunteering oppotunities at murrindindi.vic.gov.au/volunteer



Photo: Acheron Cutting Lookout

SPORT AND RECREATION

Our communities enjoy a broad range of sport and recreational activities. Some of the more popular activities can be found below:

Cycling/Walking Paths

The Shire has many wonderful roads, tracks and trails to ride or walk on. These range from easy, or more challenging, mountain bike paths and bushwalks to quiet country trails.

A long and picturesque section of the Great Victorian Rail Trail, which runs from Tallarook to Alexandra and Mansfield, passes through Murrindindi Shire and includes the historic Cheviot Tunnel.

Whether you want to enjoy a short gentle ride with the family, or take on a longer, more challenging trip, information and maps can be found at our Visitor Information Centres and in the latest brochure which you can find in our Customer Service Centres or online at:

- murrindindi.vic.gov.au/parksandtrails
- greatvictorianrailtrail.com.au

Gyms and Leisure Centres

Our Shire has a number of sport and leisure facilities available for residents. More information about these centres can be found on our Community Directory at murrindindi.vic.gov.au/communitydirectory, or calling Council on 5772 0333.

Parks and playgrounds

The Shire has more than 50 parks suitable for a variety of ages and purposes. Whether you're keen to launch from a park to a walking track, find play equipment for young children, or simply want to enjoy a picnic, our range of parks will meet your needs.

For more information about their locations and facilities available, go to murrindindi.vic.gov.au/parksandtrails or contact Council on 5772 0333.



Photo: Marysville Golf Club

Skate Parks

Skateboarding, BMX and Scooting facilities can be found at these locations:

- Alexandra Skate Park – corner Maroondah Highway and Bayley Street
- Marysville Skate Park – beside Gallopoli Park Oval
- Yea Skate Park – located at Yea Railway Reserve 16 Station Street
- Kinglake Skate Park – located at Bollygum Park 40 Whittlesea Road
- Flowerdale Skate Park – located at the Community Hall 3380 Whittlesea Yea Road

Sporting Clubs

Murrindindi Shire hosts a range of sporting clubs. These include football, soccer, tennis, cricket, bowls, netball, basketball, swimming and Little Athletics. There is also table tennis, dancing, shooting, golf and horse riding available.

For more information on these and other clubs, please check our Community Directory for details at murrindindi.vic.gov.au/communitydirectory

Swimming Pools

We have four open-air public seasonal swimming pools in the Shire. These hubs are for people of all ages and abilities to exercise and socialise. Swimming classes are also available. Our pools are open during the warmer months and close for the winter period.

Entry is FREE for the 2023-2024 season.

Our swimming pools are located as follows:

Alexandra Opposite 10 Perkins Street Alexandra VIC 3714
Eildon 39 High Street Eildon VIC 3713
Marysville 13 Falls Road Marysville VIC 3779
Yea 101 High Street Yea VIC 3717

For information about swimming programs, opening hours, admission prices and season tickets, go to murrindindi.vic.gov.au/pools or call 5772 0333.

To get current information about opening hours, and ensure you are kept informed of unexpected closures and extended hours, please follow Council's Facebook page.



Photo: Lake Eildon

EMERGENCY/OUT OF HOURS NUMBERS

For emergencies requiring assistance from police, ambulance or fire brigades, please call 000.

SES - Flood/Storm Emergency - 132 500

Radio Emergency Information:

ABC	(AM)	Victoria - 774 Australia - 621
	(FM)	Alexandra - 102.9 Eildon - 98.1
Online streaming		abc.net.au/listen
UGFM	(FM)	Alexandra/Lake Eildon - 106.9 Flowerdale - 98.9 Highlands/Yea - 88.9 Kinglake Ranges - 94.5 Marysville/Lake Mountain - 98.5
	Online streaming	ugfm.org

For a comprehensive and up to date list please visit murrindindi.vic.gov.au/emergencycontacts

To report stock on roads or dog attacks, or to report dangerous situations, such as trees blocking roads, please call 5772 0333.

To seek help for injured animals or other situations involving wildlife, please call Wildlife Victoria - 1300 094 535 or Help for Wildlife - 0417 380 687.

If your house is affected by an emergency and you need access to services, food, shelter, clothing or other emergency assistance, please call Council's Municipal Recovery Manager on 5772 0333.



Photo: Cumberland Walk



Murrindindi
Shire Council

VISIT US

Alexandra: 49 Grant Street

Yea: 15 The Semi Circle

Kinglake: 19 Whittlesea-Kinglake Road

Mobile Library and Customer Service:

visit our website for locations and times

CONTACT US

customer@murrindindi.vic.gov.au

murrindindi.vic.gov.au

5772 0333

MAIL US

Murrindindi Shire Council

PO Box 138

Alexandra VIC 3714



[@murrindindishirecouncil](https://www.facebook.com/murrindindishirecouncil)

[@discoverdindi](https://www.facebook.com/discoverdindi)

[@murrindindilibraryservice](https://www.facebook.com/murrindindilibraryservice)

[@murrindindichildrensnetwork](https://www.facebook.com/murrindindichildrensnetwork)

[@murrindindiyouth](https://www.facebook.com/murrindindiyouth)



[@discoverdindi](https://www.instagram.com/discoverdindi)

[@murrindindishireyouth](https://www.instagram.com/murrindindishireyouth)